

WELCOME to CHARM-EU at ELTE!

Onboarding kit

1. What is CHARM-EU and why is it important for ELTE?
2. About European Universities and the CHARM-EU Alliance
3. Opportunities, examples of collaboration and resources
4. Governance, organizational structure and local contact
5. Meet ELTE's CHARM-EU manager



www.elte.hu/charm-eu



www.charm-eu.eu/



EÖTVÖS LORÁND
UNIVERSITY | BUDAPEST



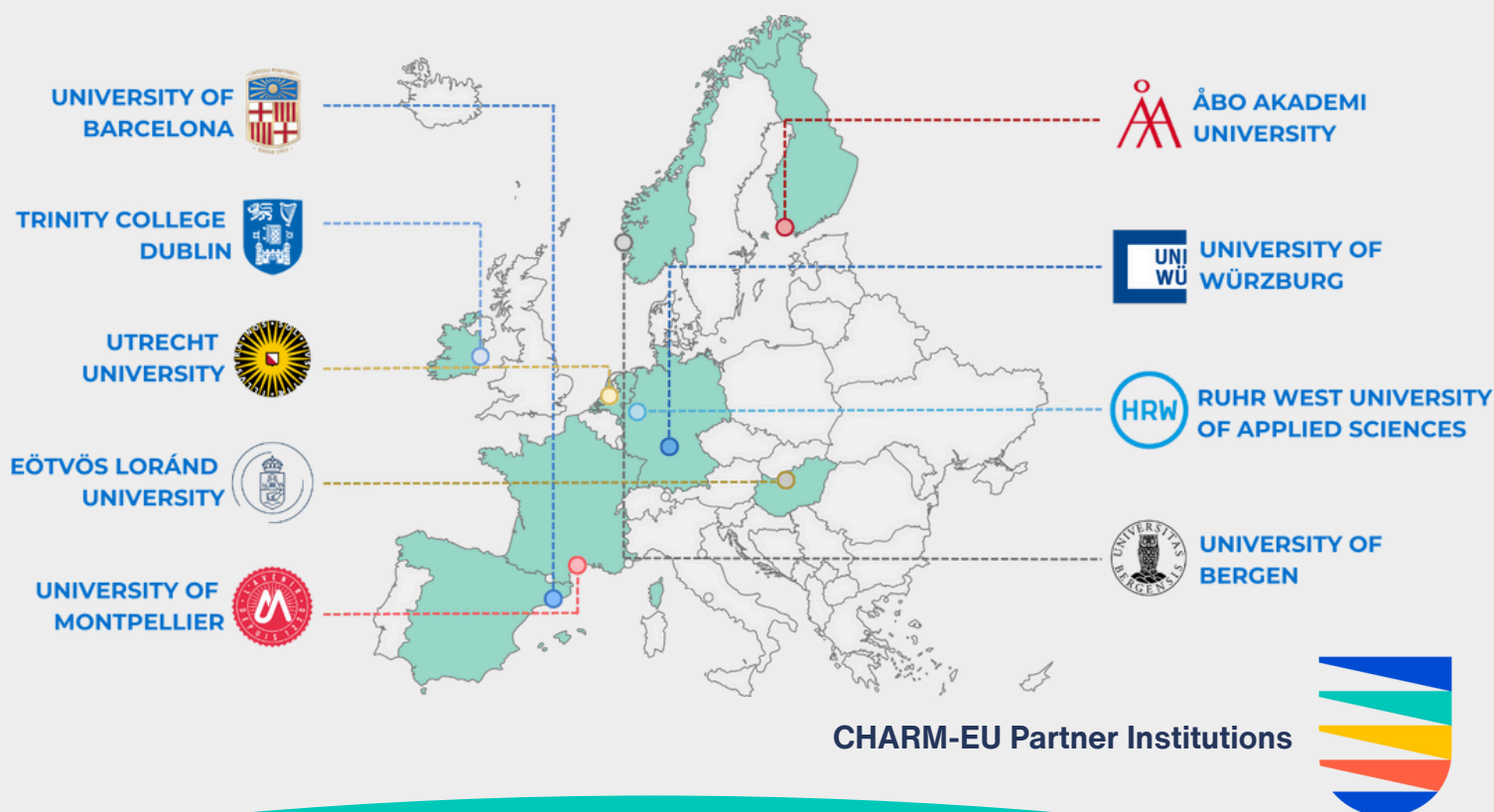
Co-funded by
the European Union

1. WHAT IS CHARM-EU AND WHY IS IT IMPORTANT FOR ELTE?

CHARM-EU is a **Challenge-driven Accessible Research-based Mobile European University alliance** uniting **nine higher education institutions**, co-funded by the Erasmus+ Programme. At CHARM-EU we work together to design and create a new university model, fostering connections with extra-academic stakeholders from business and society to collaboratively address the challenges of the 21st century.

University alliances are an initiative by the European Commission to forge alliances among higher institutions across Europe, enhancing mobility and fostering the quality, inclusiveness, and competitiveness of European higher education. CHARM-EU is one of the first alliances, working to co-create a European University aligned with the **European Values**, the **European Green Deal** and the **sustainable development goals** (SDGs).

CHARM-EU offers a growing number of opportunities to students, faculty and staff at ELTE, including transnational online learning and mobility experiences, possibilities of international network-building and collaboration, a growing portfolio of educational and professional development opportunities, and more. **All faculties of ELTE are actively involved in the work of the Alliance.**



BENEFITS FOR PARTNER UNIVERSITIES



Access to a broad international and external network: The CHARM-EU network can facilitate regional, national and international collaboration in education, research, and societal impact. Students and staff from partner universities can access a growing community crossing institutional and disciplinary borders.



Swiftly responding to calls: Through CHARM-EU, partner universities can quickly engage in new calls, incorporating their interested researchers and experts into specific thematic projects, making the collaborative drafting of proposals more efficient. CHARM-EU also provides a platform for academics to start the development of (or join) inter-institutional and interdisciplinary research collaborations.



Testbed for innovation: CHARM-EU provides a platform to experiment with new forms of inter-institutional collaboration and educational innovations. Partners can leverage the international, transdisciplinary and challenge-based experience gained in CHARM-EU and mainstream innovations and best practices internally.



Securing a strategic position: Through CHARM-EU, partner universities can play a pivotal role in co-shaping an innovative, competitive European education via **FOREU4All** and projects like **ED-AFFICHE**, thereby securing a strategic and more influential position at EU level.



Regional ecosystem and collaboration with external partners: CHARM-EU is collaborating with partners to create a regional ecosystem, consisting of business and civil society organisations. The ecosystem supports transdisciplinary education, research and impact; benefitting both academic and external stakeholders.

2. ABOUT EUROPEAN UNIVERSITIES AND THE CHARM-EU ALLIANCE

THE EUROPEAN UNIVERSITIES INITIATIVE

The **European Universities initiative** is an ambitious EU initiative aimed at establishing alliances between higher institutions from all across Europe for the benefit of their students, staff and society.

Cooperating partners are coming from different parts of Europe, representing diverse geographical, regional, cultural, lingual, economic and historical perspectives. **Alliances are creating European inter-university campuses that will:**

- promote mobility, transdisciplinarity and transnational collaboration;
- provide flexible curricula and practical / work-based learning experiences for their students;
- reflect the social, economic and cultural diversity of the population.

Following the 5th Erasmus+ call for proposals in 2024, **there are 64 alliances** involving more than 560 higher education institutions of all types, from all across Europe.



ABOUT THE CHARM-EU ALLIANCE

CHARM-EU was born in January 2019 between the [University of Barcelona](#) (coordinator), [Eötvös Loránd University](#), [Trinity College Dublin](#), [Utrecht University](#), and the [University of Montpellier](#). The proposal of CHARM-EU was among the first 17 selected by the European Commission.

In its first **educational project**, CHARM-EU was creating learning experiences that – having mobility and inclusivity at their core – are based on a transformative approach to program and curricula design. The project has resulted in the first joint Master's Programme under the European Universities initiative: **Global Challenges for Sustainability**.

In 2021, CHARM-EU secured a grant for its research and innovation strategy project: the **TORCH project** was developing a common Research and Innovation (R&I) agenda for the Alliance's founding universities.

In 2022, CHARM-EU **has won a new grant** and expanded with [Åbo Akademi University](#), [University of Würzburg](#) and [Hochschule Ruhr West](#), and with the [University of Bergen](#) in 2023. The alliance continues to work on its mission to provide a transformative European educational experience, promoting its long-term vision **along five strategic lines**.

CORE VALUES OF CHARM-EU



EDUCATIONAL PRINCIPLES



CHARM-EU's vision is to create an innovative university model that embraces the change needed to meet society's challenges, breaking down borders and linking local and global solutions.



CHARM-EU aims for a challenge-driven university, creating flexible, student-led educational programmes focused on identifying and solving specific challenges in close collaboration with the broader community.

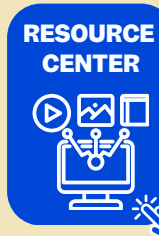


CHARM-EU aims to promote the common European values emphasizing the richness and diversity of the European tradition and focusing strategically on rethinking the role of the European universities in the world as it faces one of the main global challenges in the 21st century.

3. OPPORTUNITIES, EXAMPLES OF COLLABORATION AND RESOURCES

CHARM-EU offers various opportunities for students and staff of partner universities. **Staff members** can submit joint proposals for HORIZON or ERASMUS+ calls, develop new educational initiatives or engage in other collaborative projects through the CHARM-EU network. **Students** can participate in educational programmes designed by the alliance, gain international learning experience through transnational online learning and mobility opportunities and join events like [CHARM-DEN](#) or [ESA](#).

Explore some of them and examples of successful collaboration below.



Co-design innovative and transdisciplinary learning experiences in an international environment

CHARM-EU has developed its [Master's in Global Challenges for Sustainability](#), a joint programme providing a fully intercultural and transdisciplinary experience, preparing students for collaboration and creative problem solving through engagement with real-life sustainability challenges within [an international network of research hubs](#).

Explore graduate testimonials with our interviews:

"We have great opportunities with a CHARM-EU degree in hand"

"Significant attention was paid to how we, students were thinking and progressing"



CHARM-EU continues to co-create innovative learning experiences, broadening its [educational portfolio](#) and engaging interested academics and experts from partner universities in the design and delivery of programmes. Through the CHARM-EU network, partners can also initiate new collaborations, such as the [ELTE-led project developing a transnational Master's on Planetary Health](#).

Create and/or take part in transnational online learning and mobility opportunities

Thanks to the [inter-institutional multilateral mobility agreement](#), ELTE students from every academic background and study level can embark on [mobility experiences](#) at partner universities. By joining the online courses of partner universities featuring in the [CHARM-EU Course Catalogue](#) they can also gain international learning experience from home with transferable credits.

ELTE colleagues can apply for Erasmus+ funding to travel to partner universities through [an ongoing call of the university](#), encouraging both educational and training mobility. **Mobility to CHARM-EU partners can stimulate further collaborations such as the successful adoption of an innovate course from Utrecht University to ELTE.**



Join networking events and matchmaking initiatives to find collaborators in various fields

The CHARM-EU Alliance actively supports networking and community-building between academics and professional staff of partner universities, facilitating knowledge-sharing and creating room for collaboration and innovation. By taking part in networking events, or joining the [CHARM-EU Guide of Experts](#), ELTE colleagues can benefit from the growing community of the alliance, potentially leading to successful research proposal such as [the ELTE-led ClimEx-PE project](#).

Some networking event examples:

[Networking meeting at ELTE University Library and Archives \(2024\)](#)

[CHARM-EU R&I Days \(2023\)](#) and [Applied Data Science Days \(2024\)](#)



Connect with external stakeholders from business and society as well as partners outside Europe

CHARM-EU is actively building partnerships at local, regional, national and European levels as well as outside Europe with both academic partners and stakeholders from business and society. Engagement with partners creates great opportunities for students to:

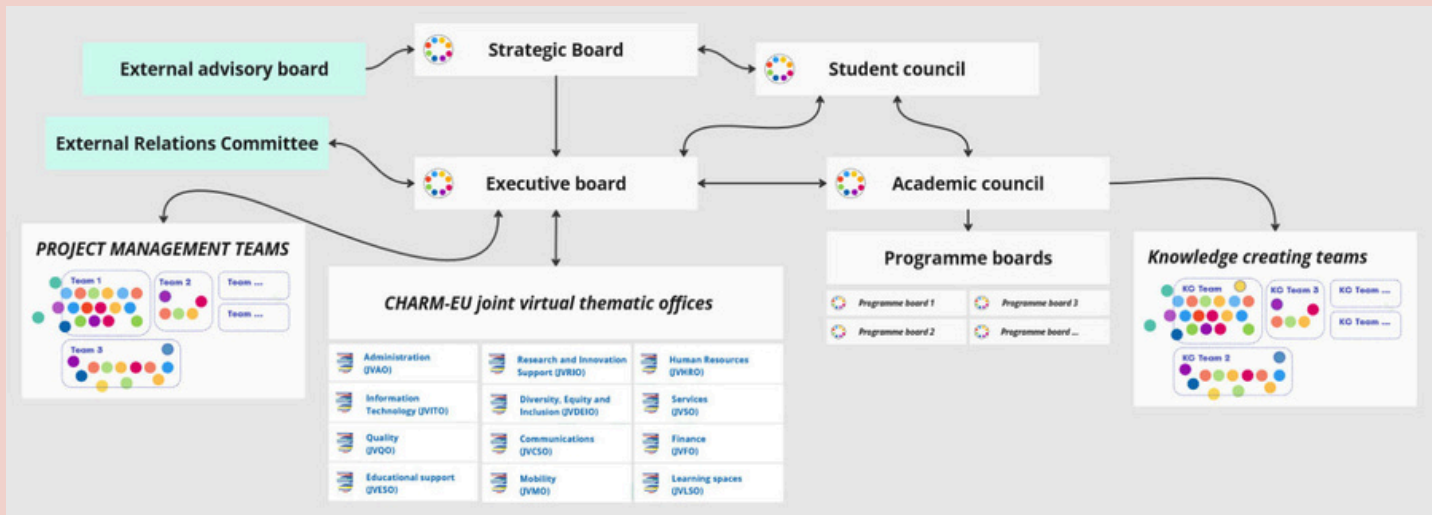
- collaboratively work with real-world challenges
- gain important field experience
- facilitate the launch their startups

External partners can tap into the CHARM-EU pool of experts, build relationships with partners from different European countries and collaborate with talented students, opening the door to potential interns.



4. GOVERNANCE, ORGANIZATIONAL STRUCTURE AND LOCAL CONTACT

CHARM-EU's governance model is flat, flexible, and bottom-up, empowering innovators and incorporating both common and local structures.



DESCRIPTION OF MAIN BOARDS AND COUNCILS

STRATEGIC BOARD

Formally approves the strategic decisions for the alliance and decides on the directions to take. Members of this board are the rectors of the partner universities.

EXECUTIVE BOARD

Responsible for all tactical and operational matters and executes the strategic decisions approved by the SB. It is constituted by the CHARM-EU Director of each partner university.

ACADEMIC COUNCIL

Responsible for the standards in teaching and research, oversees the academic matters and quality follow-up of all joint and common educational and research activities.

STUDENT COUNCIL

Represents the views and experiences of students, provides feedback on decisions and activities of the alliance. Students are represented in the SB and EB.

The **CHARM-EU Office** manages the Alliance's day-to-day activities and comprises the CHARM-EU managers in each member university and the leads of each support unit. Managers rotate as chair (with the Alliance Secretary General as permanent co-chair) reporting to the chair of the Executive Board.

The **virtual thematic support offices** of CHARM-EU complete and support the operational work of the alliance. They unite staff located in the different partner universities, allowing flexibility and providing inter-institutional and intercultural diversity for adapting to the specific needs arising in CHARM-EU. They secure the continuous, comprehensive and equal representation of each member university in the joint operation of the alliance.

Meritxell Chaves
Secretary General
of CHARM-EU



Learn more about the organisational structure of CHARM-EU here



LOCAL CHARM-EU OFFICE AT ELTE

Led by ELTE's CHARM-EU Director, the ELTE CHARM-EU Office is part of the Rector's Cabinet. The Office coordinates leadership meetings regarding CHARM-EU affairs, stays in continuous contact with the partner institutions, and arranges strategic discussions while carrying out project management and event organization in relation to the work of CHARM-EU and its programmes.

Contact information: <https://www.elte.hu/en/charm-eu/contact>

Dr. Ferenc Takó

CHARM-EU Director,
Head of the ELTE
CHARM-EU Office



MEET ELTE'S CHARM-EU MANAGER

We spoke with Anikó Béltekiné Gál about her role as CHARM-EU manager at ELTE, her advice for newcomers to CHARM-EU, and the cooperative spirit that drives the alliance.



1. Hi Anikó! What are you working on right now?

I'm working on several things at once. I'm organizing the CHARM-EU annual conference and cultural festival, while also preparing for a series of upcoming online and in-person meetings abroad over the next few days and weeks.

2. What is your role as CHARM-EU manager?

As a project manager, I primarily coordinate tasks to ensure we meet project commitments on time and smoothly—both internally and with our partners—under the guidance of leadership. This involves a lot of coordination, administration, and organization. But I enjoy arranging and getting things done.

3. What makes CHARM-EU special for you?

CHARM-EU brings people together, even within the same university, from different faculties and departments who otherwise wouldn't often meet. I can say this based on feedback from colleagues working in the joint master programme and our projects. However, realising the potential of collaboration also comes with challenges.

4. What are some of the challenges in your work at CHARM-EU?

For example, there are language difficulties. We have a lot of meetings, at different levels, online and face-to-face, where you have to get used to the accent and speaking styles of our foreign colleagues. Additionally, the projects have their own specific jargon. We have to take minutes for each meeting and familiarize ourselves with a large amount of background material.

5. What is the secret to overcoming these challenges?

Being able to articulate issues and having the courage to ask for help are essential. For example, when planning a budget, I know what I need, but I ask for help from finance to set up a transparent administrative system. If we get stuck, we need to identify the cause and find a solution by seeking the cooperation of the colleagues, departments and partners involved. In an institution and alliance of this size, there are many stakeholders and viewpoints, so it's important to act thoughtfully but efficiently.

6. What advice would you give to new people joining CHARM-EU?

The CHARM-EU alliance itself, its projects, and the system of the master programme are all very complex. I suggest that new colleagues try to learn from as many sources as possible: from our website, from colleagues, and feel free to ask questions if anything is unclear or if they would like to learn more about it.

7. What is one word you would use to describe CHARM-EU?

Cooperative. The existence, goals, and all activities of the entire alliance are based on cooperation.

FOLLOW US

to stay updated on CHARM-EU news and opportunities!



[charm.eu](#)



[charm.europeanuniversity](#)



[charm_eu](#)



[charm.eu](#)



[subscribe here](#)



[charm-eu.eu](#)



Co-funded by
the European Union