



**Trinity College Dublin**  
Coláiste na Tríonóide, Baile Átha Cliath  
The University of Dublin

# CHARM-EU and TORCH - Educating and Researching the European University

European Researchers Night 2021

Dr Nina Shiel, TORCH, Trinity College Dublin

Dr Silvia Gallagher, CHARM European University, Trinity College Dublin

24/09/2021

# Why European Universities?

## As European citizens

- What kind of Europe do we want to live in?
- How will we navigate through climate emergency?
- How do we get back on our feet after Covid?
- How do we make sure no-one is left behind?
- How do we equip our people to deal with all of the above?

## As educators and researchers

- How can we prepare our students to tackle societal challenges?
- How do we best work together to respond and anticipate challenges?
- How do we demonstrate integrity and reliability in our science?
- How do we collaborate with people who are affected by our research?

# Activity!

You are the Provost (Academic Head) of a newly established European university.

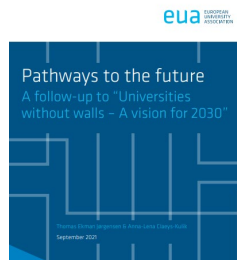
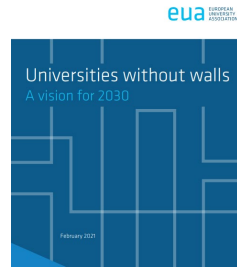
You have been asked to share what you think are the big challenges facing your university for a new “Future of Higher Education Committee”.

- **Share three big challenges you think your university will have to face in 10 years time.**

- Open a new tab on your Internet browser
- Go to [www.menti.com](http://www.menti.com)
- Type in **3540 3485**
- Share your ideas

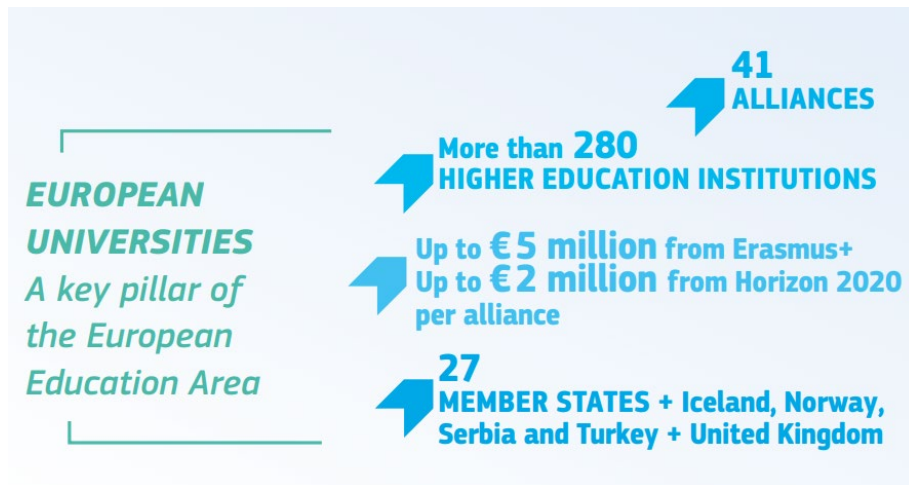
# Trends in the Future of European Higher Education & Research

- ❑ **Accelerated change** due to Covid-19
- ❑ **Technology:** AI, personalization, flexibility, ethics
- ❑ **Sustainability:** Real world global challenges
- ❑ Changing **labour markets:** Transversal skills (digital and green skills)
- ❑ Globalization of education
- ❑ Life long learning
- ❑ Underfunding



- ❑ **Collaboration and Inter/Multi/Transdisciplinarity**
  - External stakeholders and civic society
  - International and transnational collaboration
- ❑ Geopolitics, democracy and political systems
- ❑ Social disparities and demographic changes

# Who are we?



President N initiative fo

Deba Euro movi

September 27, 201

European EAC/A03

Share

Privacy Statement

STATUS DEADLI

CLOSED • 28/0

Related selection res Related beneficiaries

Trinity joins 15th January 2019

Press release

# Minister Harris congratulates six Irish higher education institutions successful under the second call of the European Universities Initiative

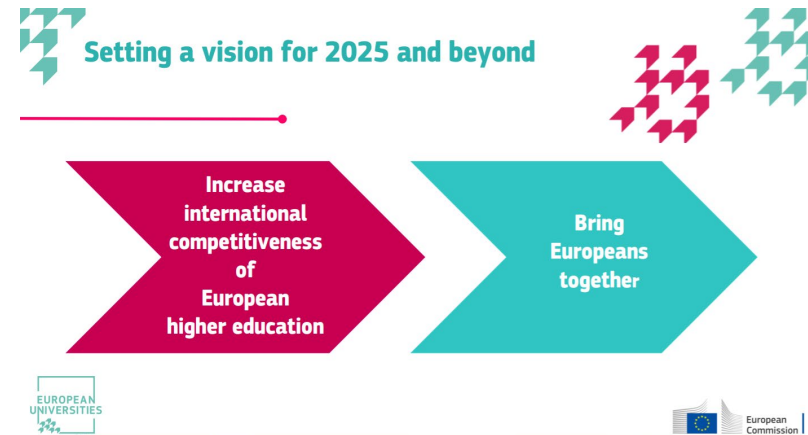


Trinity College Dublin has joined a newly launched European University today. Together with four other prestigious universities, including the University of Barcelona, Utrecht University, the University of Montpellier and Eötvös Loránd University, it has signed a foundational agreement for the Charm European University (Charm-EU) which will focus on the United Nations' Sustainable Development Goals (SDGs) providing an interdisciplinary, challenge-based

# European Universities Initiative

## Reimagine strategies towards:

- Internationalisation
- Mobility
- Transnational collaborations
- Governance structures
- Academic policies
- Teaching and Learning
- Curriculum design



# European Universities Initiative

“The **transformation** of our universities needs to be accelerated so young people are prepared for the jobs of tomorrow in a fast-changing society, and future generations are empowered to **find solutions to big societal challenges** that Europe and the world are facing.”





# Who are we?

**EUROPEAN  
UNIVERSITIES**  
*A key pillar of  
the European  
Education Area*

- More than **280**  
HIGHER EDUCATION INSTITUTIONS
- Up to **€ 5 million** from Erasmus+  
Up to **€ 2 million** from Horizon 2020  
per alliance
- 41**  
ALLIANCES
- 27**  
MEMBER STATES + Iceland, Norway,  
Serbia and Turkey + United Kingdom

**CHARM-EU**



**CH**allenge-driven  
**A**ccessible  
**R**esearch-based  
**M**obile  
**E**uropean  
**U**niversity

**Education**



**Research and  
innovation**

**TORCH**  
Transforming Open Responsible Research  
and Innovation through CHARM

# Who are we?

**EUROPEAN UNIVERSITIES**  
*A key pillar of the European Education Area*

- More than **280** HIGHER EDUCATION INSTITUTIONS
- Up to **€ 5 million** from Erasmus+  
Up to **€ 2 million** from Horizon 2020 per alliance
- 41** ALLIANCES
- 27** MEMBER STATES + Iceland, Norway, Serbia and Turkey + United Kingdom

**Research and innovation**



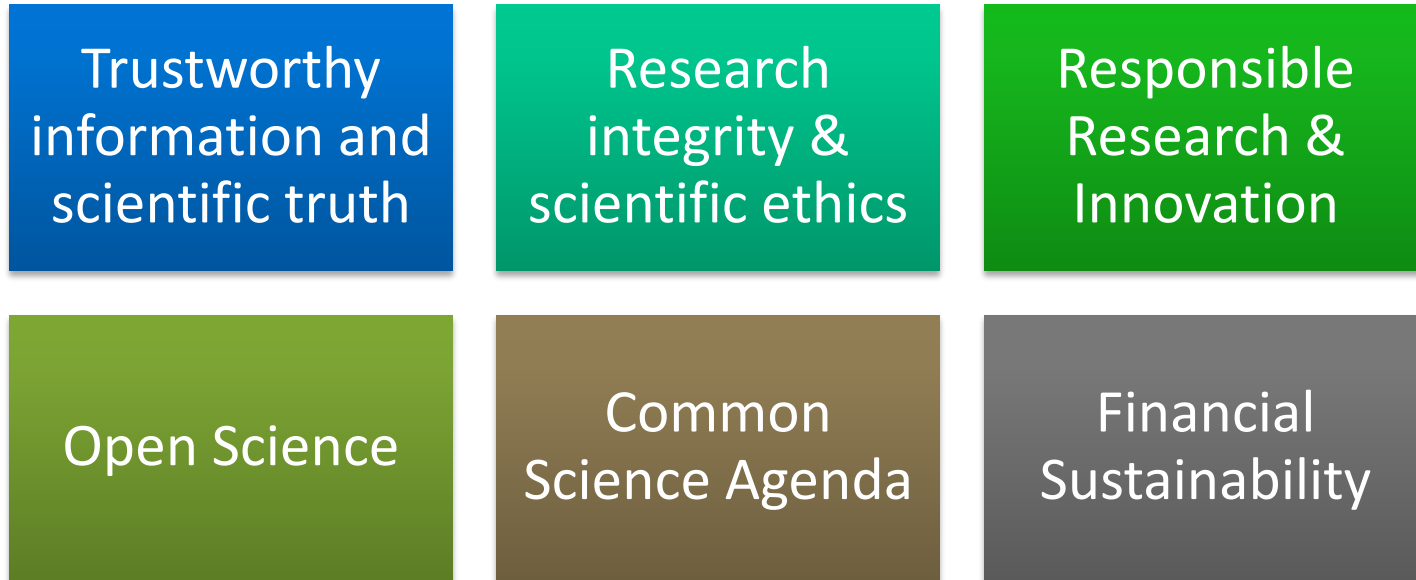
# Activity!



In your opinion, what is required for  
good research to be possible?

- Open a new tab on your Internet browser
- Go to [www.menti.com](http://www.menti.com)
- Type in **3540 3485**
- Share your ideas

# Transforming Open Responsible Research & Innovation through CHARM (TORCH)



# How can we do better research?



# Who are we?

## EUROPEAN UNIVERSITIES

*A key pillar of  
the European  
Education Area*

**41**  
ALLIANCES

**More than 280**  
HIGHER EDUCATION INSTITUTIONS

Up to **€ 5 million** from Erasmus+  
Up to **€ 2 million** from Horizon 2020  
per alliance

**27**  
MEMBER STATES + Iceland, Norway,  
Serbia and Turkey + United Kingdom

## CHARM-EU



**CH**allenge-driven  
**A**ccessible  
**R**esearch-based  
**M**obile  
**E**uropean  
**U**niversity

## Education

# Challenge driven, Accessible, Research based, Mobile European University (CHARM-EU)

A sustainable,  
transferable, inclusive  
model for a European  
inter-university campus

Transdisciplinary,  
research-based, mobile  
teaching and learning

A student journey leading  
towards a collaborative,  
research-based authentic  
challenge.

Solving the challenges  
associated with *Reconciling  
Humanity with the Planet*  
through transdisciplinary,  
research-focused  
educational approaches.

Authentic engagement  
with the knowledge  
triangle stakeholders  
from enterprise,  
research, and education.




Promote European  
values via a  
transformative  
European educational  
experience.

# CHARM-EU MSc in Global Challenges for Sustainability



- Challenge based
- Situated learning
- Research-led / Research based
- Transversal skills
- Sustainability
- Transdisciplinarity
- Technology enhanced
- Transnational and intercultural
- Student centred
- Inclusivity



<p><b>PHASE 1</b> <b>Preparatory</b></p> 	<p>The aim of the preparation phase is to <b>ensure all students receive a common grounding</b> (regardless of location or modality) in key skills and content required for the challenges ahead of them.</p> <p>Modules in this phase concentrate on <b>transversal skill development</b> to prepare students for a transdisciplinary learning approach in the following phases.</p>	<p><b>PHASE 1 MODULES</b></p> <p><b>M1</b> Social innovation</p> <p><b>M2</b> Sustainability</p> <p><b>M3</b> Transdisciplinary Research</p>
<p><b>PHASE 2</b> <b>Flexible</b></p> 	<p>The aim of this phase is to provide students with <b>multiple options for learning within CHARM-EU related themes</b>. Students are required to select one theme containing multiple modules, and participate in modules within that theme.</p> <p>Modules are <b>grouped into relevant themes</b> related to CHARM-EU programme content guidelines.</p>	<p><b>PHASE 2 MODULES</b></p> <p><b>THEME FOOD</b></p> <p><b>M1</b> The Food-Health-Environment Nexus</p> <p><b>M2</b> Food Systems and their Transformations</p> <p><b>M3</b> Socially Just and Sustainable Food Systems</p> <p><b>THEME LIFE and HEALTH</b></p> <p><b>M1</b> Health Systems and Policies</p> <p><b>M2</b> Health Challenges</p> <p><b>M3</b> Healthy Lives and Wellbeing</p> <p><b>THEME WATER</b></p> <p><b>M1</b> Extremes in the Water Cycle and Their Complex Consequences</p> <p><b>M2</b> Adaptation Measures and Strategies in Water Management</p> <p><b>M3</b> Resilient Cities: Water in Urban Environments</p>
<p><b>PHASE 3</b> <b>Capstone</b></p> 	<p>The aims of this phase include <b>synthesis of prior learning</b>, refinement of skills, development of personal attributes, preparation of students for future careers, facilitation of academic and extra-academic linkages, and quality assurance of graduates via a <b>final challenge-driven project</b>.</p> <p>Students practically <b>apply their knowledge and competencies</b> through <b>experimental learning</b> (i.e. real-life challenges).</p>	<p><b>PHASE 3 MODULES</b></p> <p><b>M1</b> Capstone</p>



# The hybrid classroom

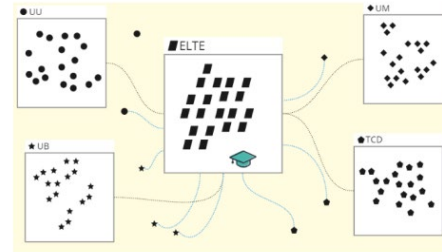
## Hybrid Classrooms



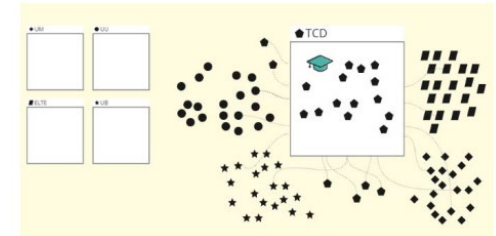
### 1 Hybrid classroom in each University

- pods equipped (5 per each HC)
- tech equipped
- modular furniture
- cosy corner

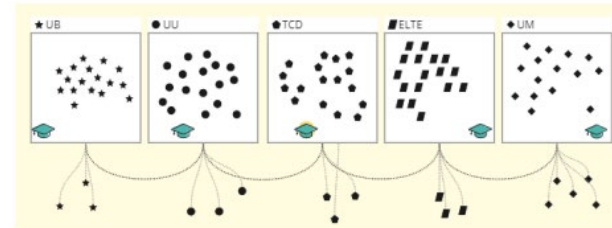
### One main classroom scenario

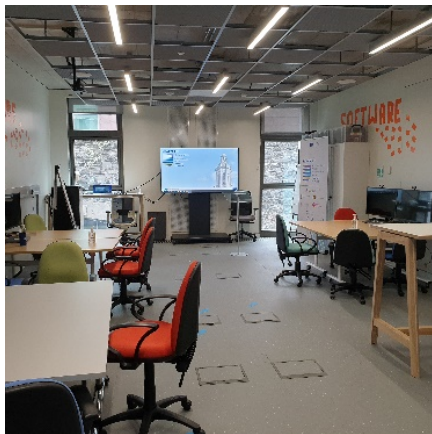


### Just one classroom scenario



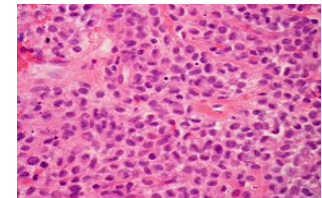
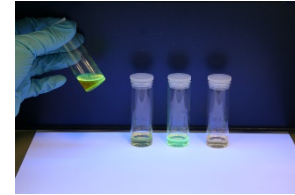
### Five classrooms scenario





# CHARM-EU module development

- Transdisciplinary teams of academics from five universities: **Knowledge Creation Teams (KCTs)** (250+)
- Module advisory boards
- Educationalists
- Professional development opportunities (Hackathons, online modules, personalized support)



Credit: Trinity Image bank, Wikimedia Commons

# How are we being innovative?

## More than dual/joint degrees

- Developing systemic solutions to an enhanced and expanded model of learning mobility
- Framework for cooperation to allow jointly created and jointly delivered new degrees
- Enhanced collaborative opportunities

## Innovative course development

- Developing new pedagogic models that include researchers and businesses by design



## More Erasmus style mobility

- Informing and preparing for a new model of more inclusive mobility
- Mobility is viewed differently



## Transformative research experience

- Challenge-driven common R&I agenda
- Responsible R&I as its foundation
- Cooperation and engagement with other sectors

# Activity!

Having seen what TORCH and CHARM are working on:

What would you do now to futureproof your university?

- **Share ideas in Mentimeter.**

- Open a new tab on your Internet browser
- Go to [www.menti.com](http://www.menti.com)
- Type in **3540 3485**
- Share your ideas

# Take Home Points



Define the role of Europe in the 21<sup>st</sup> century in the face of unprecedented challenges



Reconcile Humanity with the Planet



Deeply interconnected European University: externally to other institutions and sectors, and internally between support structures



Reimagine the traditional university model



Promote and reinforce societal trust in universities



Sustainable & Responsible education and Research & Innovation



**Trinity College Dublin**

Coláiste na Tríonóide, Baile Átha Cliath

The University of Dublin

# Thank You

@sabayone – [nina.shiel@tcd.ie](mailto:nina.shiel@tcd.ie)

@SilviaGallagh20 – [gallags6@tcd.ie](mailto:gallags6@tcd.ie)

 [charm\\_eu](https://twitter.com/charm_eu)

 [charm.eu](https://www.instagram.com/charm.eu)

[www.charm-eu.eu](http://www.charm-eu.eu)

[info@charm-eu.eu](mailto:info@charm-eu.eu)