

CHARM-EU



CHallenge-driven
Accessible
Research-based
Mobile
European
University

Co-funded by the
Erasmus+ Programme
of the European Union



The CHARMobility experience

8 September 2021

Luca Alexa Erdei

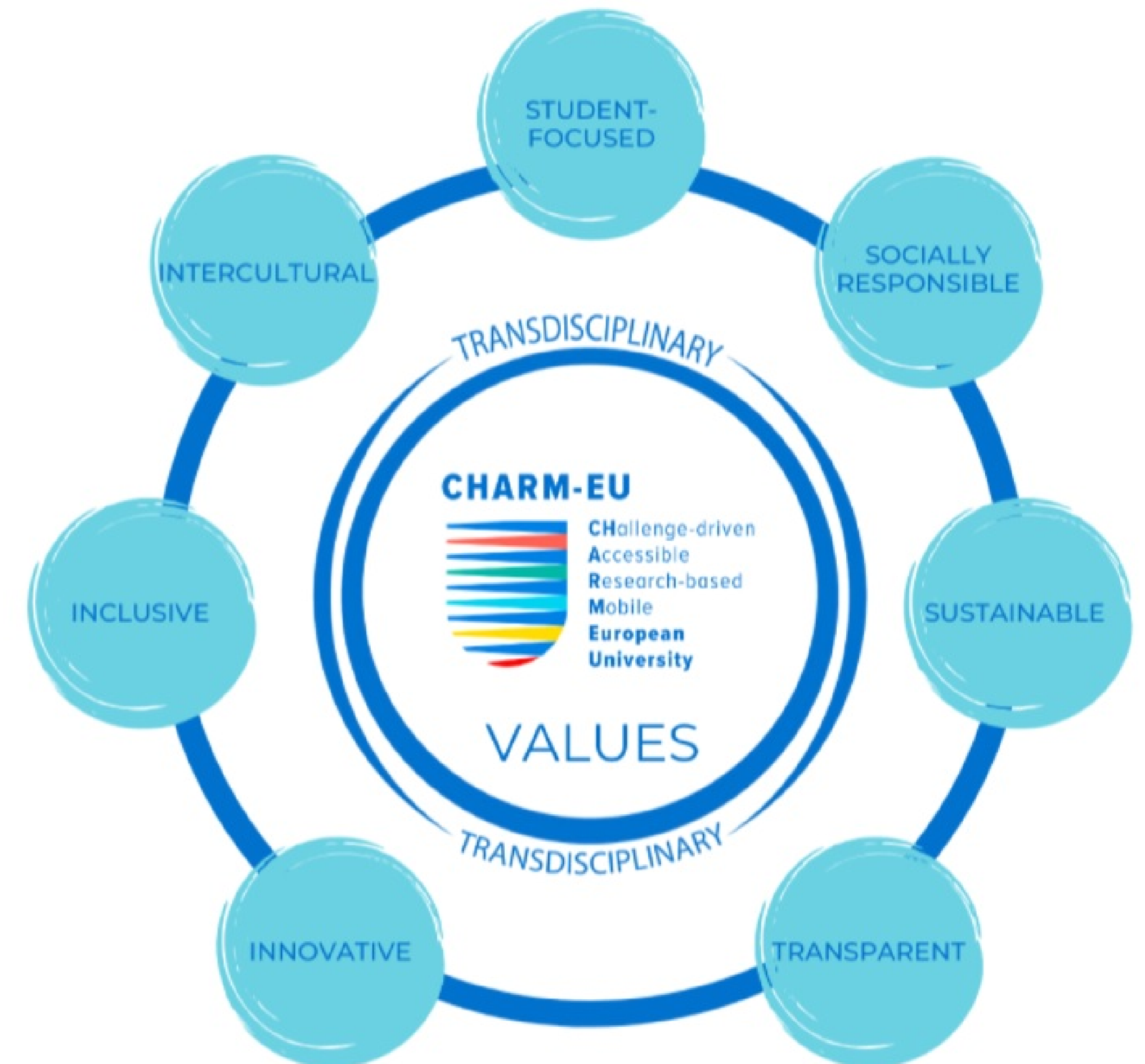
erdei.luca@ppk.elte.hu





The CHARM-EU model

- First generation of a unique and innovative university model
- Co-creation of this new model together with students
- Building a strong CHARM-EU Community together with students, staff, teachers and extra-academic actors - KCTs
- Running a pilot master's programme to test and validate the strategies, operational bodies, etc.






Mobility within the CHARM-EU Alliance

CHARM-EU students & CHARM-EU staff = **one international university community** / pilot Master's in Global Challenges for Sustainability

Pre-defined **mobility options integrated into the curriculum** to help achieving the learning outcomes, from which students can **make their own choices** to create a **unique learning path**.


Staff mobility – especially teaching mobility – is an integral part of the pilot programme.

Students are obliged to go on mobility for **at least 1 partner institution**, for which they can use dedicated **Erasmus+ funding and top-up grants**.




SCENARIO 1

Introduction phase	Elective phase	Capstone phase
<ul style="list-style-type: none">• 1 week-long Winter School with virtual exchange• 2 week-long virtual seminar	<ul style="list-style-type: none">• 5 day-long Conference on campus or other location• 12 week-long project-work with a short-term physical mobility• 1 week-long hackathon with a virtual aspect	<ul style="list-style-type: none">• 8 week-long internship (physical mobility)• 4 week-long project work with blended mobility



SCENARIO 2

Introduction phase	Elective phase	Capstone phase
<ul style="list-style-type: none">• 8 week-long seminar with virtual exchange• 1 week-long Winter School on campus	<ul style="list-style-type: none">• 12 week-long studies with physical mobility (phase mobility)• 1 week-long workshop with blended mobility• 12 week-long mentoring with a short-term physical mobility	<ul style="list-style-type: none">• 12 week-long project-work with physical mobility (phase mobility)

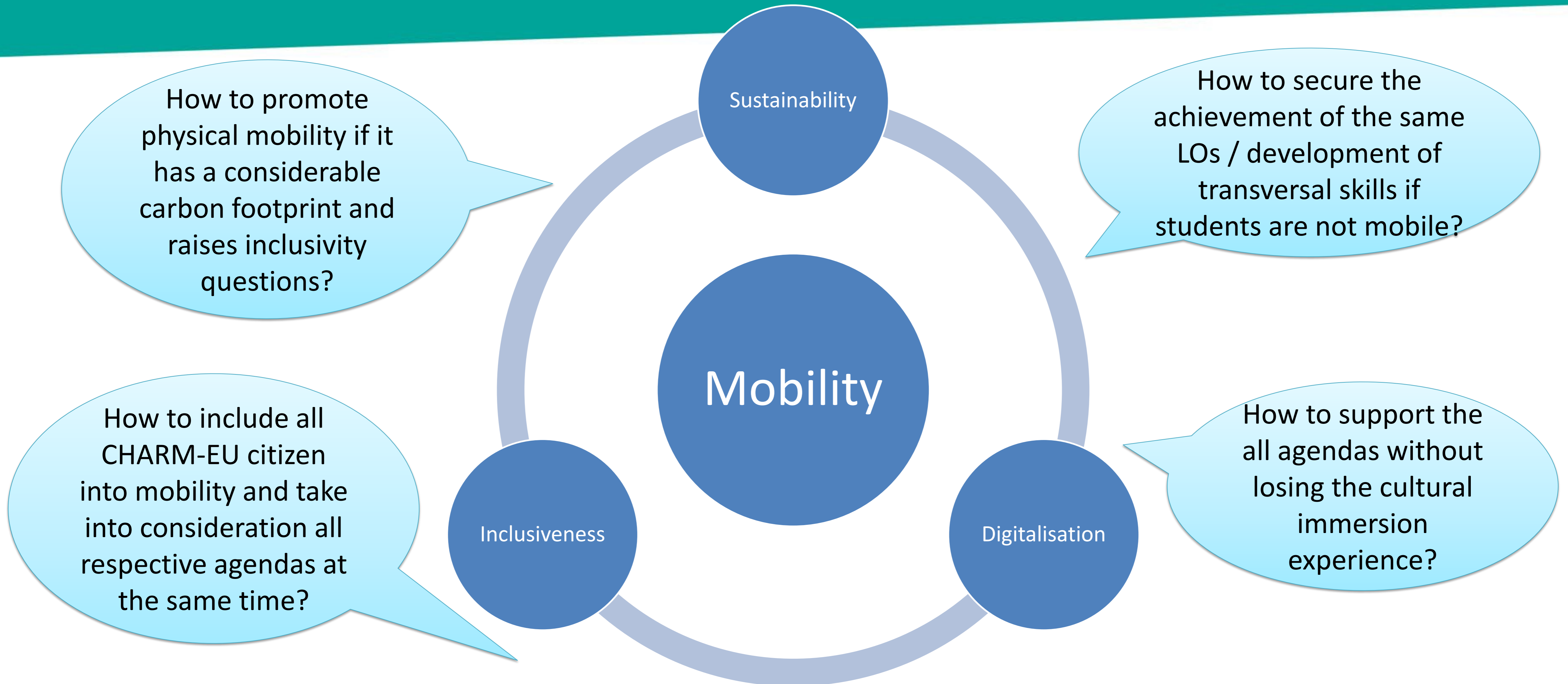


SCENARIO 3

Introduction phase	Elective phase	Capstone phase
<ul style="list-style-type: none">• 12 week-long project-work with virtual exchange	<ul style="list-style-type: none">• 1 week-long conference with virtual exchange• 1 week-long hackathon with virtual mobility• 1 week-long physical fieldtrip	<ul style="list-style-type: none">• 10 week-long fieldwork with physical mobility• 12 week-long supervisory collaboration with 2 short-term physical mobilities

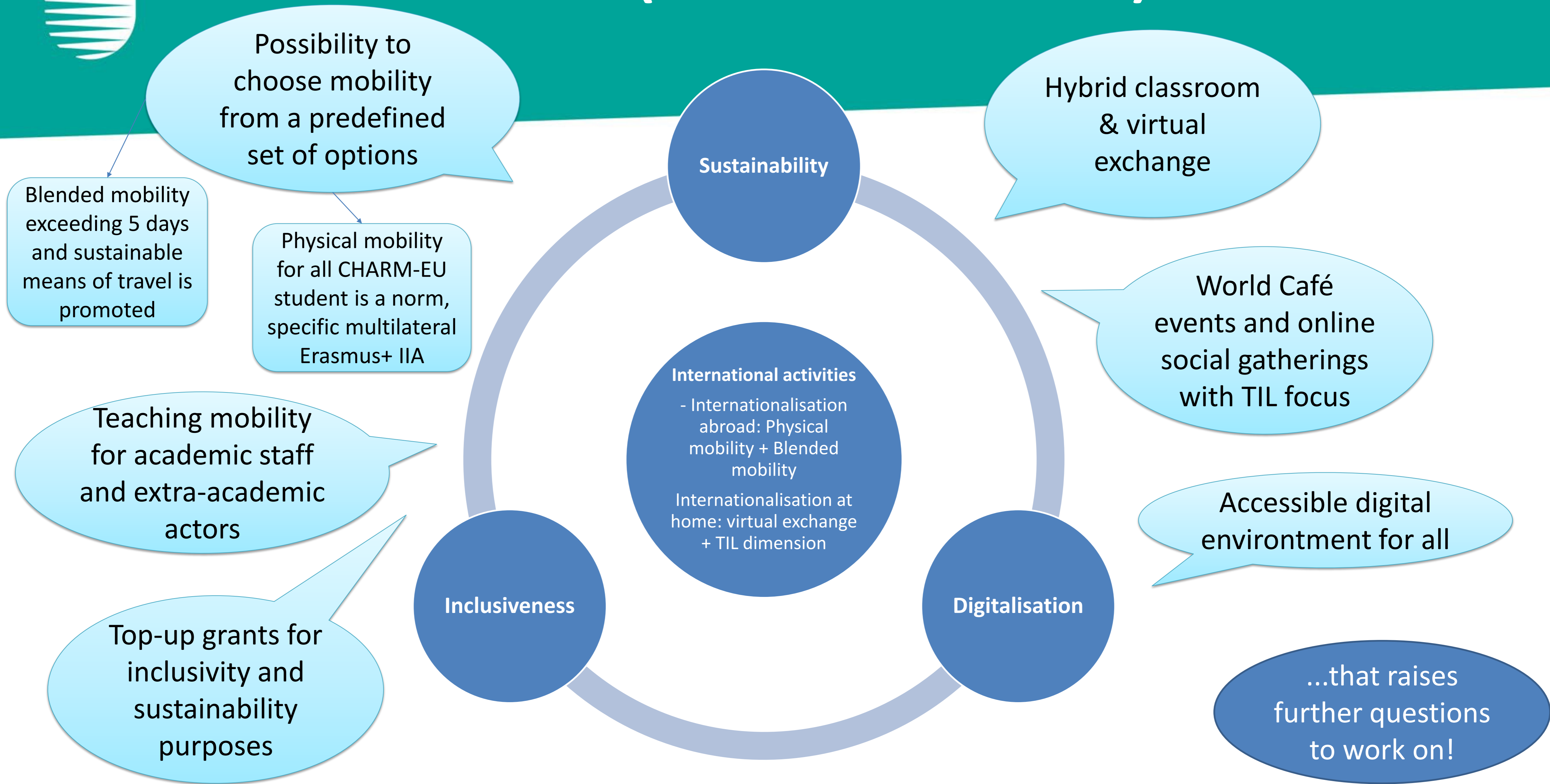


„How to...?“





A solution (not THE solution)...



CHARM-EU



CHallenge-driven
Accessible
Research-based
Mobile
European
University

**MOLTES GRÀCIES
MUCHAS GRACIAS
FÒRÇA GRÀCIAS
MANY THANKS
GO RAIBH MAITH AGAT
HEEL ERG BEDANKT
MERCİ BEAUCOUP
NAGYON KÖSZÖNÖM
DANKE SCHÖN!**

 [charm_eu](#)

 [charm.eu](#)

www.charm-eu.eu

info@charm-eu.eu