

CHARM-EU



CHallenge-driven
Accessible
Research-based
Mobile
European
University

Co-funded by the
Erasmus+ Programme
of the European Union



Innovative models for increasing mobility

CHARM-EU as an example of European Universities

Presented by: Núria Casamitjana
EAIE Conference, 15th of October 2020

#CHARMEU
#EAIE2020



CHARM-EU



CHallenge-driven
Accessible
Research-based
Mobile
European
University

Co-funded by the
Erasmus+ Programme
of the European Union



About the European Universities Initiative

A key pillar of the European Education Area

Reconciling Humanity with the Planet by creating the university of the future

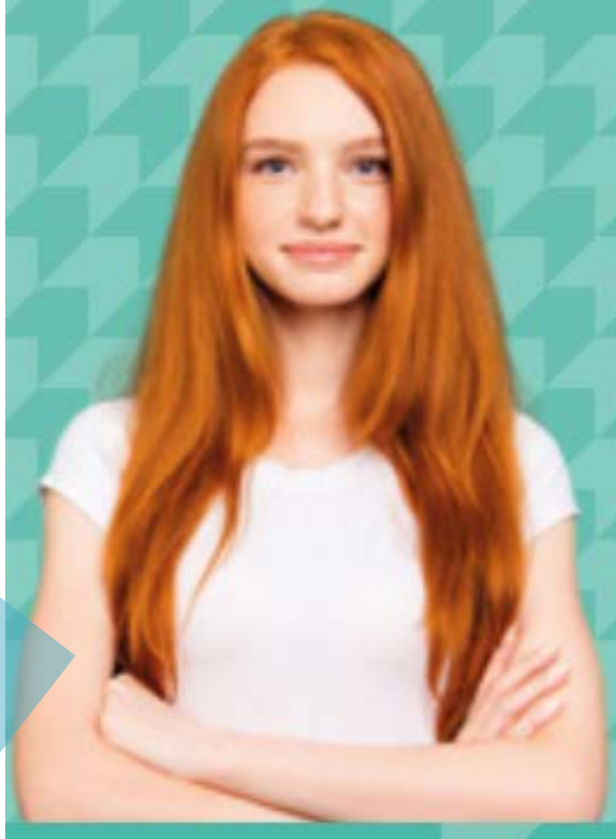


About the European Universities Initiative

24 Spanish universities

5 from Catalonia

CHARM-EU (UB)
EUTOPIA (UPF)
ECIU University (UAB)
UNITE! (UPC)
Aurora Alliance (URV)



More than **280**
HIGHER EDUCATION INSTITUTIONS

41
ALLIANCES

Up to **€ 5 million** from Erasmus+
Up to **€ 2 million** from Horizon 2020
per alliance

27
**MEMBER STATES + Iceland, Norway,
Serbia and Turkey + United Kingdom**

CHARM-EU
Coordinated by
the University of
Barcelona

CHARM-EU



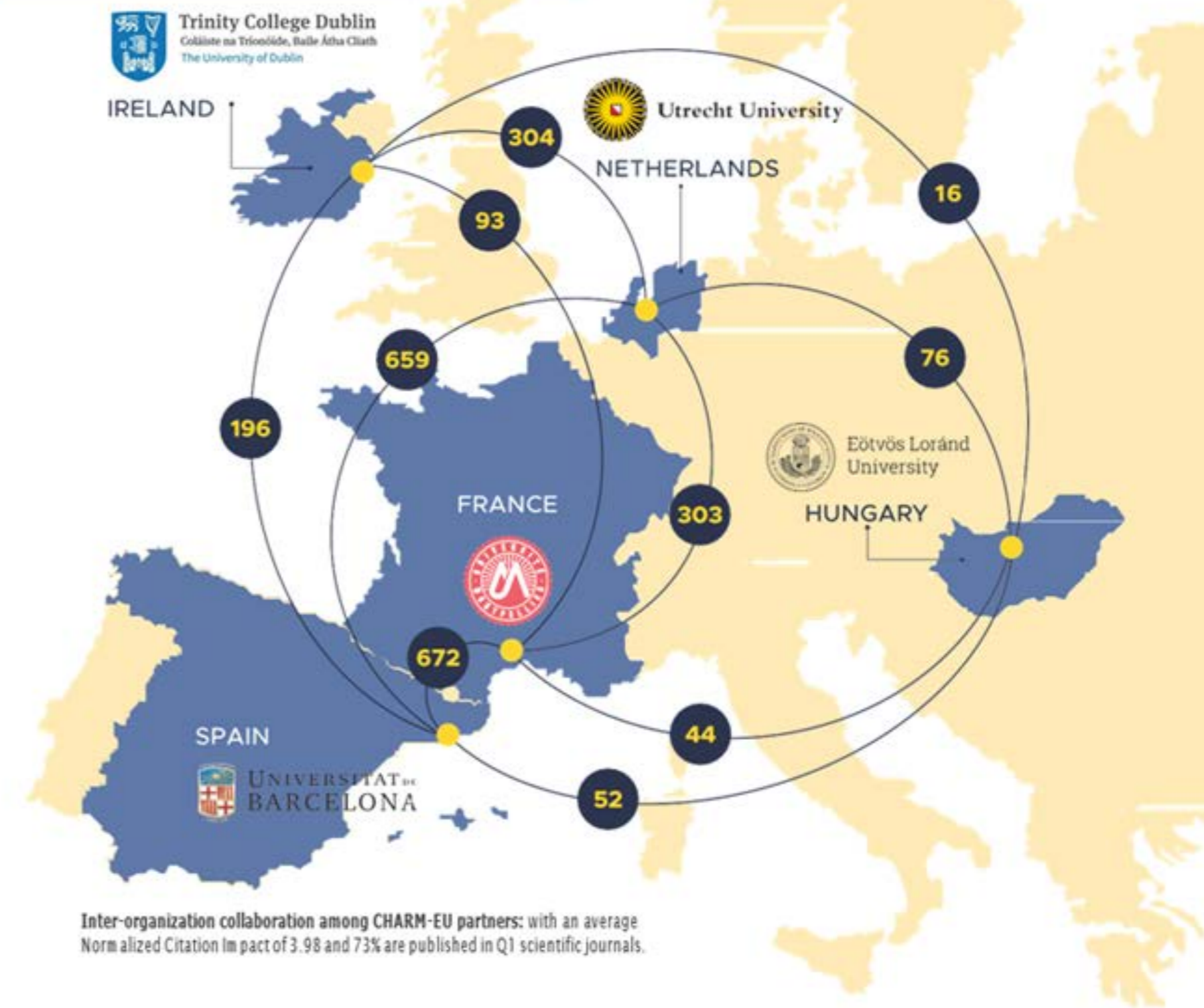
CHallenge-driven
Accessible
Research-based
Mobile
European
University

Co-funded by the
Erasmus+ Programme
of the European Union



CHARM European University

Number of Co-authored Article



Reconciling Humanity with the Planet by creating the university of the future



Unique points



Designing an inspiring **experience** for all students and staff to become **critical thinkers and better citizens** in a **multicultural, multilingual and inclusive** learning environment.



Delivering **skills and attribute-based transdisciplinary challenge-driven programmes** within a new and **flexible** academic structure with **self-directed learning pathways** within the theme of **Reconciling Humanity with the Planet**.



Innovating in curriculum and learning strategies using the **full potential of the knowledge triangle** across and within the disciplines and within the transdisciplinary space.



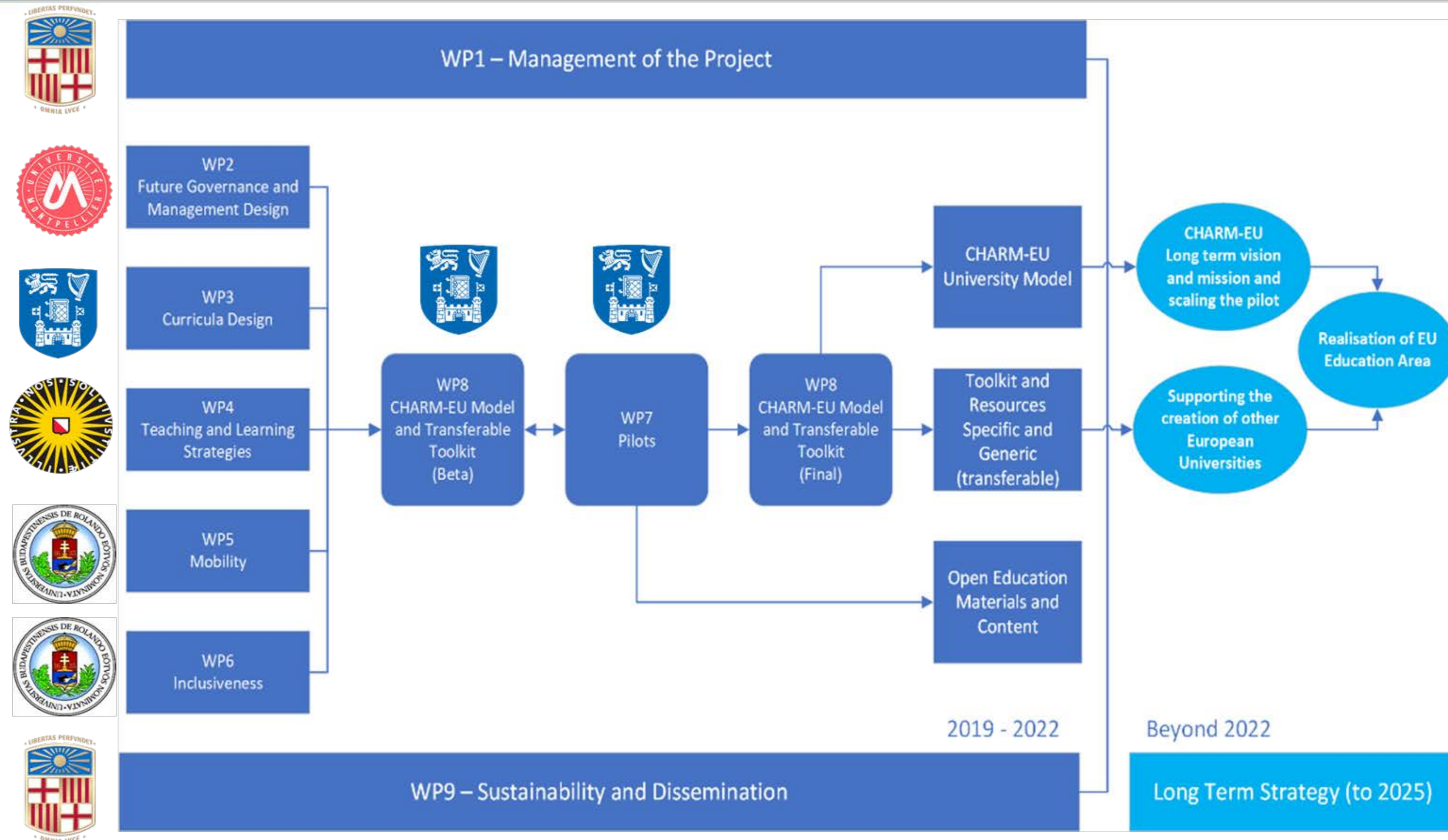
Creating a new **innovative governance** model of multi-institutional cooperation that encourages **co-creation and co-working** among the university community and the stakeholders.



Ensuring **financial sustainability** for all potential future partners within European Universities.

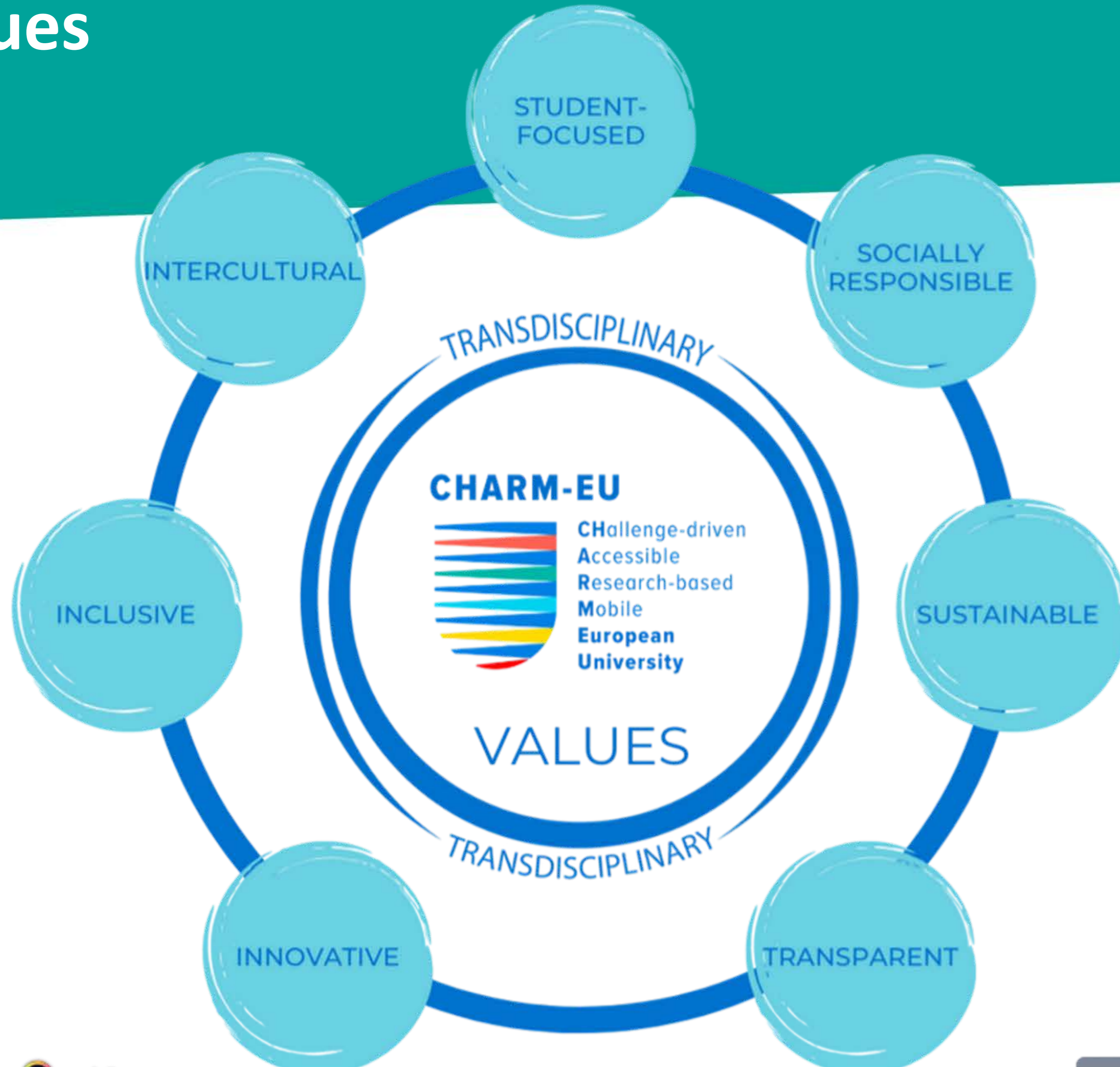


CHARM-EU modeling and testing





Values





Educational principles



- ✓ Challenge-driven
- ✓ Research-based, research-led
- ✓ Sustainability
- ✓ Technology-enhance
- ✓ Student centred
- ✓ Situated learning
- ✓ Transversal skills
- ✓ Transdisciplinarity
- ✓ Transnational and intercultural learning
- ✓ Inclusivity



The master's structure Global Challenges for Sustainability



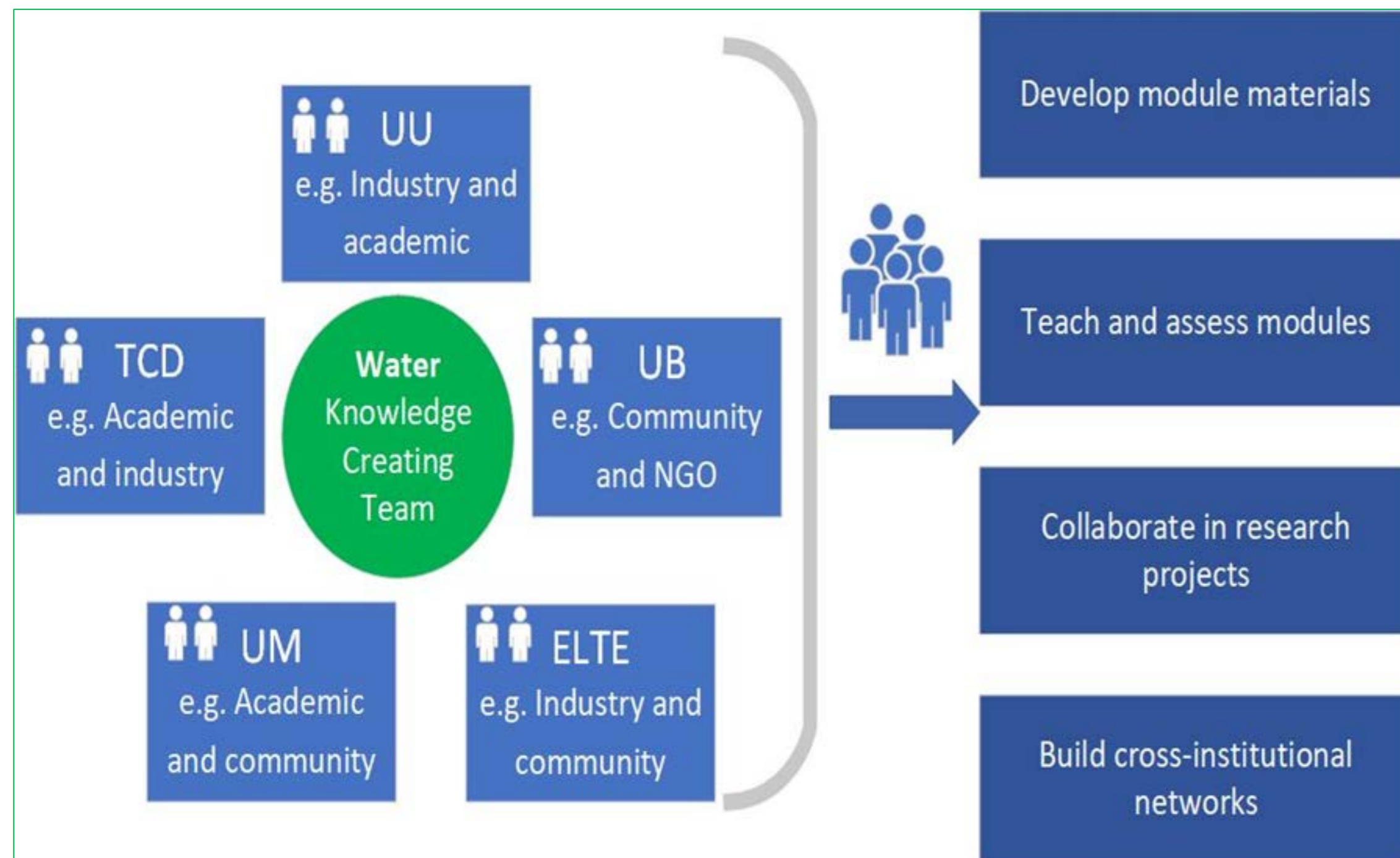
Main features

Joint programme awarded by all universities with the five logos

- ✓ 90 ECTS
- ✓ 1 ECTS = 25-30 hrs
- ✓ Target number of students: 100
- ✓ Multidisciplinary and transdisciplinary (participation of business professionals and civil society members)
- ✓ Blended
- ✓ Mobility embedded in the curriculum
- ✓ Two tracks to be chosen by the student: 12 months, or 18 months



The Knowledge Creating Teams



- ✓ Phase 1: 30ECTS initial develop skills and knowledge. Hybrid classroom
- ✓ Phase 2: Flexible 30 ECTS in Water, Food or Life & Health
- ✓ Phase 3: Capstone 30 ECTS in teams analysing and presenting solutions for a real challenge



Mobility as a norm

Mobility is embedded in the curriculum and used as a tool for competence development.

A wide and comprehensive range of mobility types and activities integrated across the programmes and the alliance.

A mobility matrix has been produced with different types of mobility:

- ✓ Modality (face-to-face, **on-line, hybrid, blended**)
- ✓ Period (**short**, long)
- ✓ One or **more** per module
- ✓ Several **types** of activities
- ✓ Student, academic staff, non-academic staff
- ✓ Individual / **in groups**

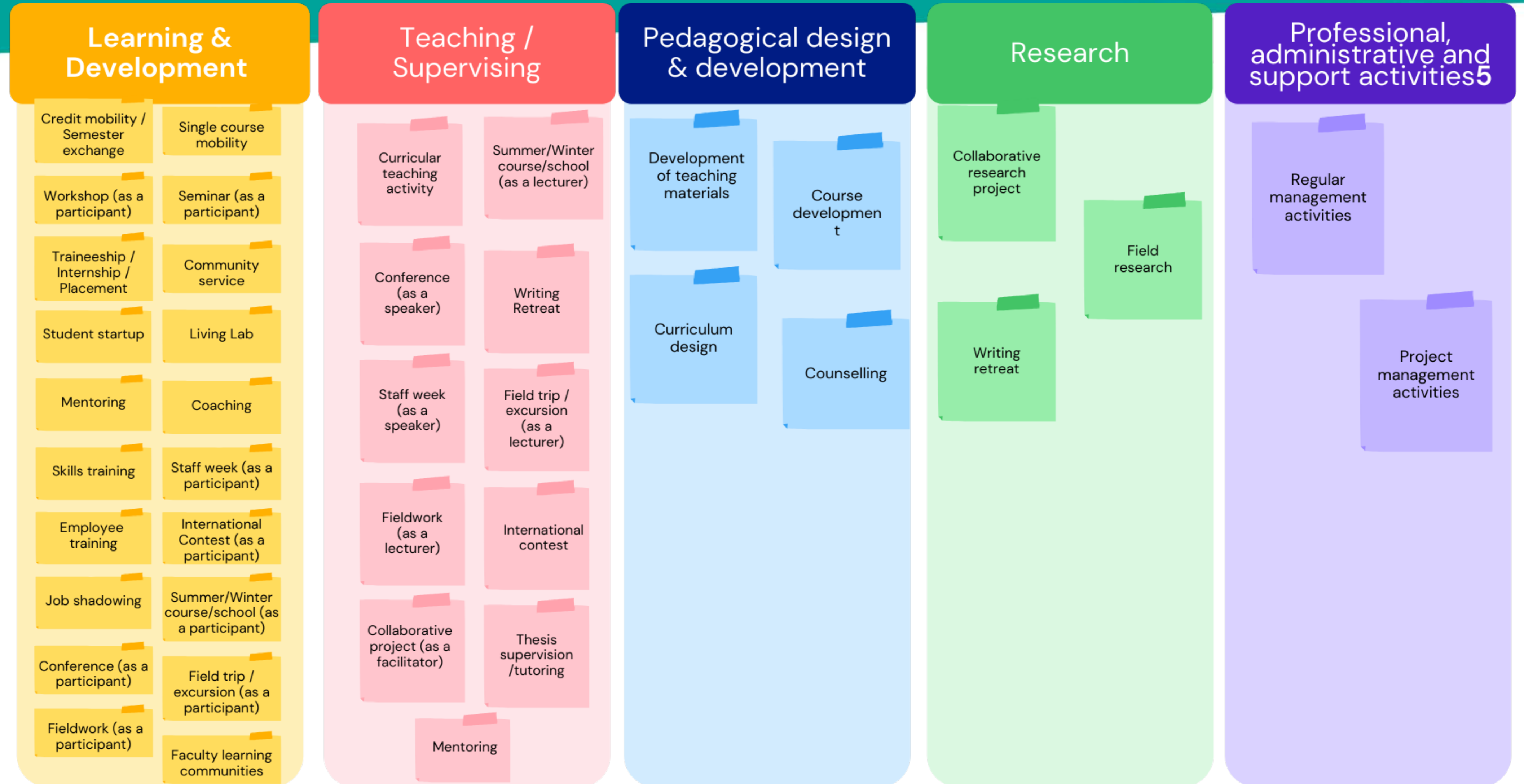
The mobility matrix is used by the curriculum designers to link it to the expected learning outcomes



Mobility as a norm

The CHARM-EU Mobility Matrix

Categories & Activities





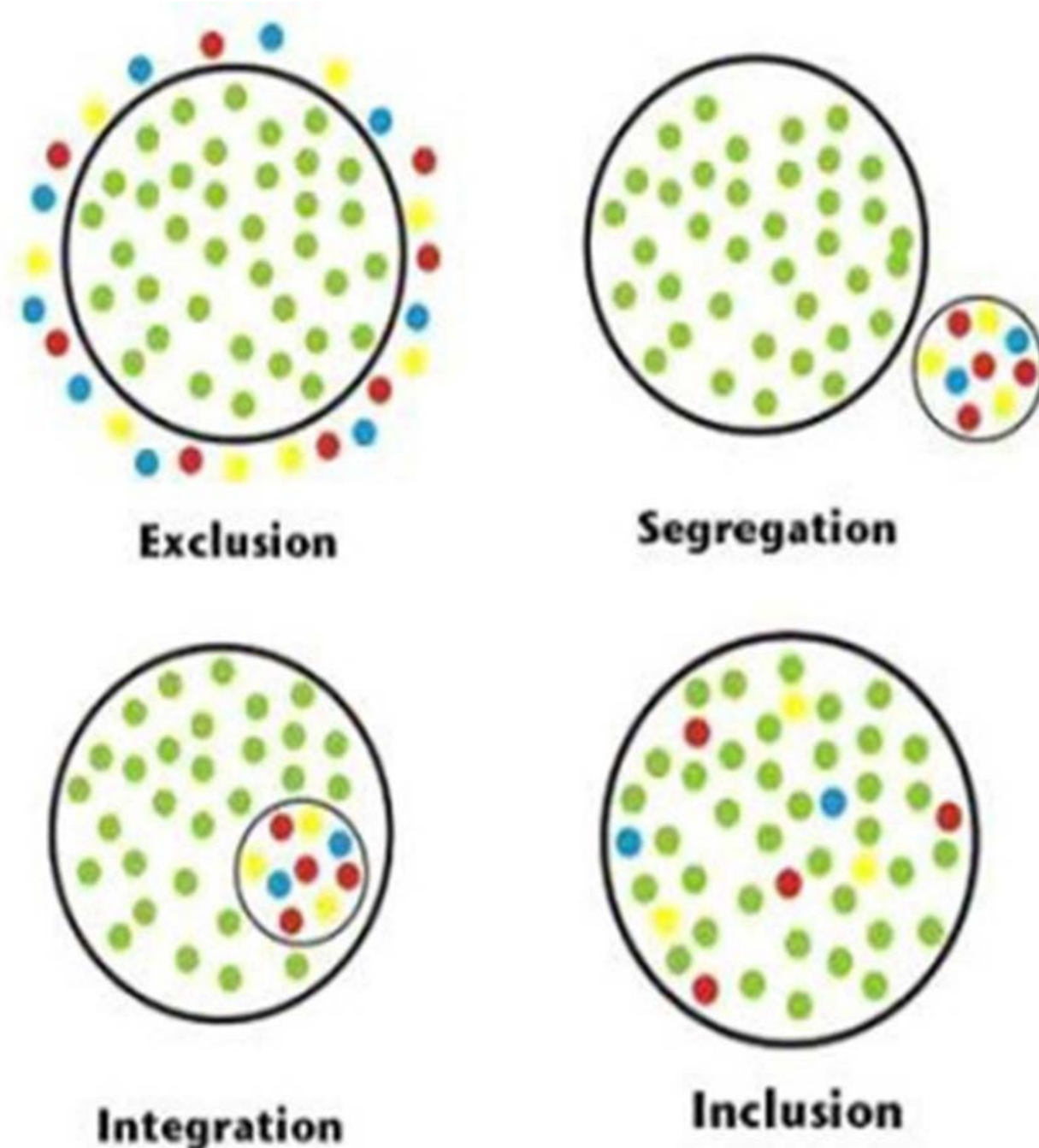
Mobility as a norm

Criteria for each activity





Mainstreaming inclusion & diversity in CHARM-EU



CHARM-EU supports that inclusion and diversity sit at the heart of the CHARM-EU's culture, design and delivery

- ✓ **Mapping policies & practices** that support access & participation of students & staff with various backgrounds in higher education
- ✓ **Collection of good practices** in the field of access & inclusion
- ✓ **Inclusivity checklist:** Mainstreaming inclusion in all areas of CHARM-EU
- ✓ **Encompassing all voices:** promoting and safeguarding full and effective participation of people with own lived experiences
- ✓ **Universal Design Approach** in Higher Education
- ✓ **Inclusion aspects** in various areas including admission criteria and grants
- ✓ **Recommendations** for a more inclusive higher education policies & practices.

CHARM-EU



CHallenge-driven
Accessible
Research-based
Mobile
European
University

**MOLTES GRÀCIES
MUCHAS GRACIAS
FÒRÇA GRÀCIAS
MANY THANKS
GO RAIBH MAITH AGAT
HEEL ERG BEDANKT
MERCİ BEAUCOUP
NAGYON KÖSZÖNÖM
DANKE SCHÖN!**

 [charm_eu](#)

 [charm.eu](#)

www.charm-eu.eu

info@charm-eu.eu