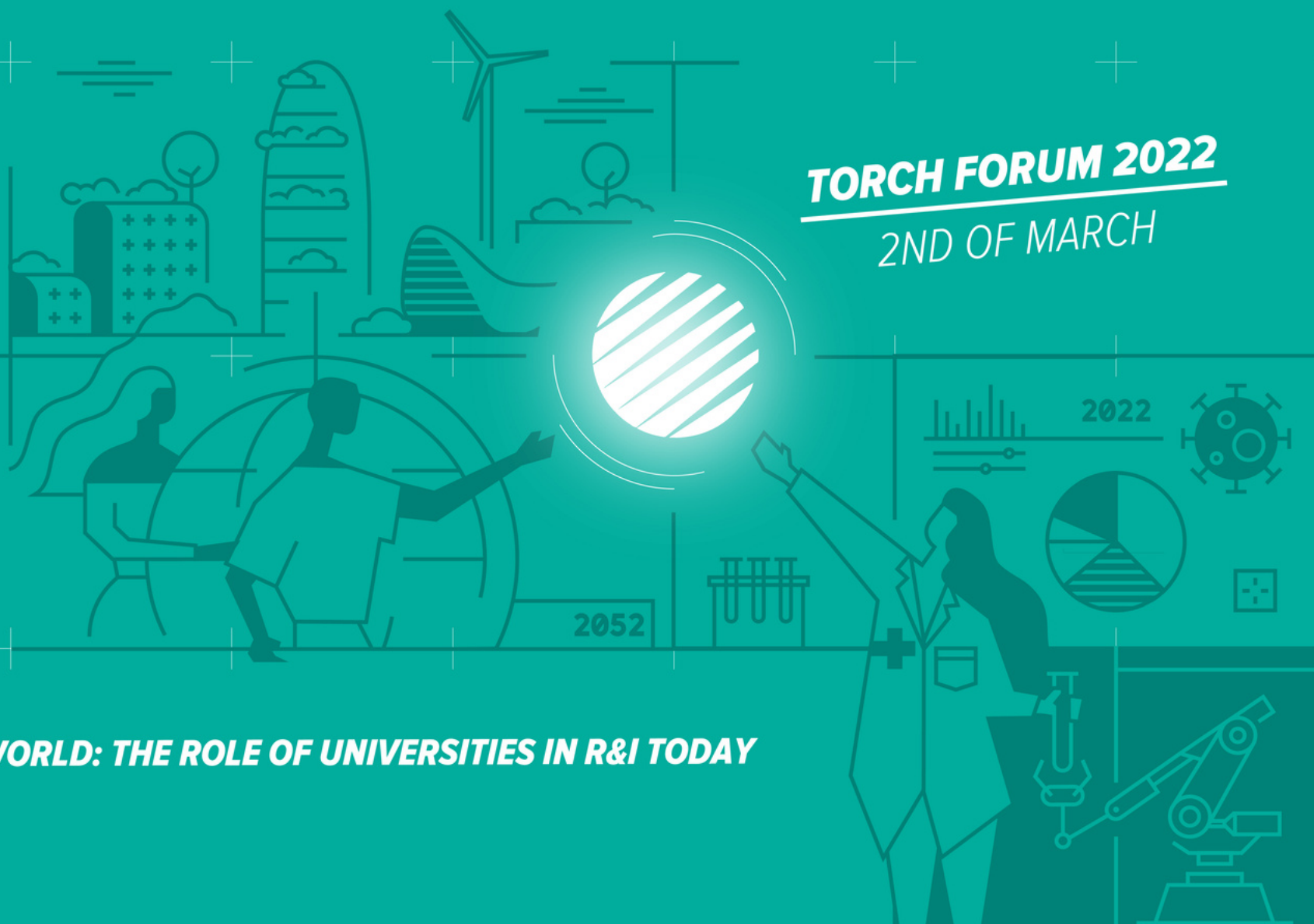


PROGRAMME

FUTURE



TORCH FORUM 2022
2ND OF MARCH

RESEARCH

SUSTAINABILITY IN A POST-PANDEMIC WORLD: THE ROLE OF UNIVERSITIES IN R&I TODAY
MORE INFO AT: WWW.CHARM-EU.EU/TORCH



FOLLOW US:



WHAT IS THE TORCH ANNUAL FORUM?



The TORCH Annual Forum is a unique opportunity for participants to reflect and discuss the role of Universities and society in R&I today. The event will bring together various European Universities alliances to discuss about trends and challenges in R&I.

Top 3 Reasons you can't miss the TORCH Annual Forum



You will discuss about the challenges in Research assessment reform, how the European Union is approaching it and what we can learn from the work of the European Universities alliances.



Learn about the importance of cross cutting principles such as Ethics, integrity, interdisciplinary, gendered innovation in responsible research and the challenges in developing common implementation approaches by different alliances.



Exchange ideas and knowledge on how European University alliances can impact a sustainable future through a common R&I Agenda.

More info at: www.charm-eu.eu/torch

PROGRAMME TORCH ANNUAL FORUM



2 MARCH 2022 (ONLINE EVENT)

10:00 - 10:30 Opening ceremony | Welcome address

Link: <https://elteiig.webex.com/elteiig-en/j.php?MTID=m211f1e46df0d8c7c42c712c7e2090775>

Presented by: Prof. Enikő MAGYARI. Eötvös Loránd University

- Prof. Dr. László PALKOVICS. Minister of Innovation and Technology, Hungary (video message)
- Prof. Dr. László Borhy, Rector, Eötvös Loránd University
- Prof. Dr. Jordi Garcia, Vice-Rector of Research, University of Barcelona
- Message from Prof. Stefan Müller-Stach, Vice President for Research at JGU Mainz, FIT FORTHEM coordinator read by dr Nicole Birkle, FIT FORTHEM managing coordinator

10:30 - 11:30 Plenary session | R&I trends in the (post?) pandemic scenarios

This introductory plenary session will serve to frame the topic: the R&I framework and the (post?) pandemic scenarios. What are some current trends/strategic thinking on this topic (state of play and looking forward)? What we are doing to advance this agenda and the role of the European Universities initiative and their SWAFs projects.

Moderator: Prof. Enikő MAGYARI. Eötvös Loránd University

- Ms Apostolia Karamali. Head of Unit. Directorate-General for Research and Innovation. European Union
- Prof. Dr. Jordi Garcia, Vice-Rector of Research, University of Barcelona
- Csilla Stéger, Manager at PwC Hungary Ltd. Government Advisory, division responsible for HE-government relationships
- Dr. Joan X Comella. Director. Vall d'Hebron Institute of Research (VHIR). TORCH Quality Committee

11:30 - 11:45 Short break



11:45 - 12:30 Panel session | European universities: Towards a reform of the research assessment system

[Link: https://elteiig.webex.com/elteiig-en/j.php?MTID=m211f1e46df0d8c7c42c712c7e2090775](https://elteiig.webex.com/elteiig-en/j.php?MTID=m211f1e46df0d8c7c42c712c7e2090775)

This session will discuss the rationale, the proposed approach and principles and work to date, analysing the challenges and benefits to reforming such a multi-actor system to support a diverse range of outputs, activities and career directions. The panel will also look at the role that the European Universities initiative can play in driving such reform and considers whether there are benefits for teaching and other activities outside of research.

Presented by: Prof. Enikő MAGYARI. Eötvös Loránd University

Chaired by: Doris Alexander. Trinity College Dublin

- Ludovic Thilly. Chair of the Executive Board. Coimbra Group
- Anouk Tso. Director of International Affairs. University of Amsterdam. EPICUR - Research
- Tullio Vardanega (ARQUS)
- Prof. Dr. F. Miedema. Vice Rector Research, Utrecht University. TORCH (CHARM-EU)

12:30-13:30 Lunch Break

13:30 - 15:00 TORCH Clusters | Crosscutting conversations across R&I topics and sustainability

Four parallel sessions that seek to to combine R&I impact/actions and sustainable factors. It will help to enhance policy coherence by promoting systemic approaches across the same challenges (SDGs/European Green Deal) while presenting main progresses on the TORCH project.



CLUSTER 1 R&I Common Science Agenda and European Universities

[Link: https://elteiig.webex.com/elteiig-en/j.php?MTID=m78df5346fa62d6537f37231a8d3844ad](https://elteiig.webex.com/elteiig-en/j.php?MTID=m78df5346fa62d6537f37231a8d3844ad)

Chair: Fiona Killard. Trinity College Dublin
Rapporteur: Jaime Llorca (UB)

Speakers:

- Albert Diaz. TORCH (CHARM-EU). University of Barcelona
- Katarzyna Molek-Kozakowska and Maria Pitarch. FIT FORTHEM, University of Opole, Poland, University of Valencia, Spain
- Nihan Yildirim. EELISA InnoCORE (EELISA)
- Emrah Acar EELISA InnoCORE (EELISA)
- Hür Bersam Sidal Bolat EELISA InnoCORE (EELISA), ITÜ (Istanbul Technical University)

CLUSTER 2 Business & Society and academic cooperation

[Link: https://elteiig.webex.com/elteiig-en/j.php?MTID=m487722d2b7163bbc0faeb78a5249f405](https://elteiig.webex.com/elteiig-en/j.php?MTID=m487722d2b7163bbc0faeb78a5249f405)

Chair: Inese Rozensteine. TORCH (CHARM-EU). University of Montpellier
Rapporteur: Elea Pippo. TORCH (CHARM-EU) University of Montpellier.

Speakers:

- Benoît Bardy. University of Montpellier. With the project BEAT HEALTH, a musical application for the rehabilitation of Parkinson's patients and the training of athletes
- Dr. Zoltán URBÁNYI, Manager of Department, Biotechnology Research Department
- Dr. Anicet Blanch. University of Barcelona. Founder and CTO of Bluephage (a biotechnological company specialized in producing testing kits to identify faecal and viral indicators within water)
- Rasa Viederyte, EU-CONEXUS RFS-Research for Society Manager. Klaipeda University, Lithuania.
- Josep Bordonau, UPC-BarcelonaTech, Unite!
- Juan-Jesús Pérez, UPC-BarcelonaTech, Unite!

**CLUSTER 3 Public engagement**

Link: <https://elteiig.webex.com/elteiig-en/j.php?MTID=me90b505d0bc8f343cc241eab10505be9>

Chair: Dr. Marjanneke Vijge, CHARM-EU. Utrecht University
Rapporteur: Kirsten Hollaender (UU)

Speakers:

- Dr. Annisa Triyanti, TORCH. Utrecht University. Presenting the findings from WP7 on (dis)incentives for public engagement and transdisciplinary science
- Kate Morris. Head of Campus Engage at the Irish Universities Association.
- Troels Jacobsen. University of Stavanger. Director of Innovation and societal engagement. ECIU Alliance
- Prof. Tomas Berkamanas. Associate Professor at the Faculty of Law, Vytautas Magnus University. T4ERI (T4Europe)

CLUSTER 4 Cross-cutting principles to address a transformative R&I Agenda

Link: <https://elteiig.webex.com/elteiig-en/j.php?MTID=m580f470abe385ced8b82c87d0c8235ee>

Chair: Gemma Marfany, TORCH (CHARM-EU). University of Barcelona
Rapporteur: Jędrzej Olejniczak. FORTHEM

Speakers:

- Lorraine Leeson. TORCH (CHARM-EU). Trinity College Dublin.
- Till Ansgar Baumhauer. Project Speaker & Leader. EU4ART_differences. EU4ART
- Mireille Stijns. Leading of the community-engaged research and innovation (CERI) work package in YUFERING (YUFE)
- Nuria Bautista Puig. R&D Technical Support at YUFERING and researcher at Carlos III University of Madrid.

15:00 - 15:30 Short break**15:30 - 16:30 Panel session | Open Science**

Link: <https://elteiig.webex.com/elteiig-en/j.php?MTID=m211f1e46df0d8c7c42c712c7e2090775>

In this panel, three alliances, CIVIS, AURORA and CHARM-EU, will introduce the Open Science practices and plans of their current SWAF projects.

Presented by: Prof. Enikő MAGYARI. Eötvös Loránd University
Chair: Dr. Aczél Balázs Zoltán (ELTE)
Rapporteur: Anikó Gal-Belteki (ELTE)

Speakers:

- Ignasi Labastida. TORCH (CHARM-EU). CRAI Research Unit. University of Barcelona
- Mihnea Dobre, researcher and affiliate Professor at the Humanities Division of the University of Bucharest, and he is also the leader of the module on Open Science within RIS4CIVIS.
- Roberto delle Donna. Work Package leader for Open Science in AURORA RI (AURORA)

16:30**Closing**

Presented by: Prof. Enikő MAGYARI. Eötvös Loránd University

- Closing words by Prof. Dr. Joan Guàrdia Olmos. Rector. University of Barcelona (TORCH Coordinator)

