

TRANSFORMING OPEN RESPONSIBLE RESEARCH AND INNOVATION THROUGH CHARM – TORCH

DELIVERABLE D1.1 – TORCH: KICK-OFF MEETING REPORT

Project Acronym	TORCH
Grant Agreement	101017229
Project Title	Transforming Open Responsible Research and Innovation through CHARM
Coordinator	University of Barcelona
Consortium	University of Barcelona Trinity College Dublin Utrecht University University of Montpellier Eötvös Loránd University Budapest
Website	tbd
Deliverable	D1.1
Title of Deliverable	TORCH: Kick-Off Meeting Report
Work Package	WP1
Work Package Leader	Prof. Raul Ramos (UB, Vice-dean of Research, Faculty of Economics and Business)
Deliverable Type	Report
Dissemination Level	Public (PU)
License	CC BY
Document Version	V3 (Final)
Due Date	January 2021
Submission Date	February 2021
Authors (Main Beneficiary)	University of Barcelona
Other Contributors	All Consortium Partners



This project has received funding from the European Union's Horizon 2020 research and innovation programme under grant agreement No 101017229

DOCUMENT HISTORY

Date	Revision No	Prepared By	Description
23-02-2021	V1	Prof. Raul Ramos (UB), Meritxell Chaves (UB), Jaime Llorca (UB)	Index and first version of the content
25-02-2021	V2	WP members (Project Management Team)	Discussion and review comments
26-02-2021	V3	Jaime Llorca (UB)	Comments and suggestions included. Last version ready.

TABLE OF CONTENTS

Table of Contents	3
List of Figures and Tables	3
i TORCH Project: Public Introduction	4
1 Kick-Off Meeting Executive Summary	9
2 Kick-Off Meeting - Session 1	10
3 Kick-Off Meeting - Session 2	11
4 Conclusions and Next Steps	13
Annex I: Meeting Agenda	14
Annex II: Meeting List of Participants & Attendants	16
Annex III: Meeting Presentations	19

LIST OF FIGURES & TABLES

Figure 1. CHARM-EU Members and Areas of Knowledge	4
Figure 2. CHARM-EU core values and R&I dimension model	5
Table 1. TORCH list of partners	7
Table 2. TORCH list of Work Packages	7

I. TORCH PROJECT: PUBLIC INTRODUCTION

Transforming Open Responsible Research and Innovation through CHARM - TORCH

CHARM-EU represents a Challenge-Driven, Accessible, Research-based and Mobile model for the co-creation of a European University aligned with the European Values and the Sustainable Development Goals (SDGs). It is an initiative formed by five research-based universities (University of Barcelona, Trinity College Dublin, Utrecht University, Eötvös Loránd University Budapest and University of Montpellier) which was created to become a world example of good practice to increase the quality, international competitiveness and attractiveness of the European Higher Education landscape (Figure 1).

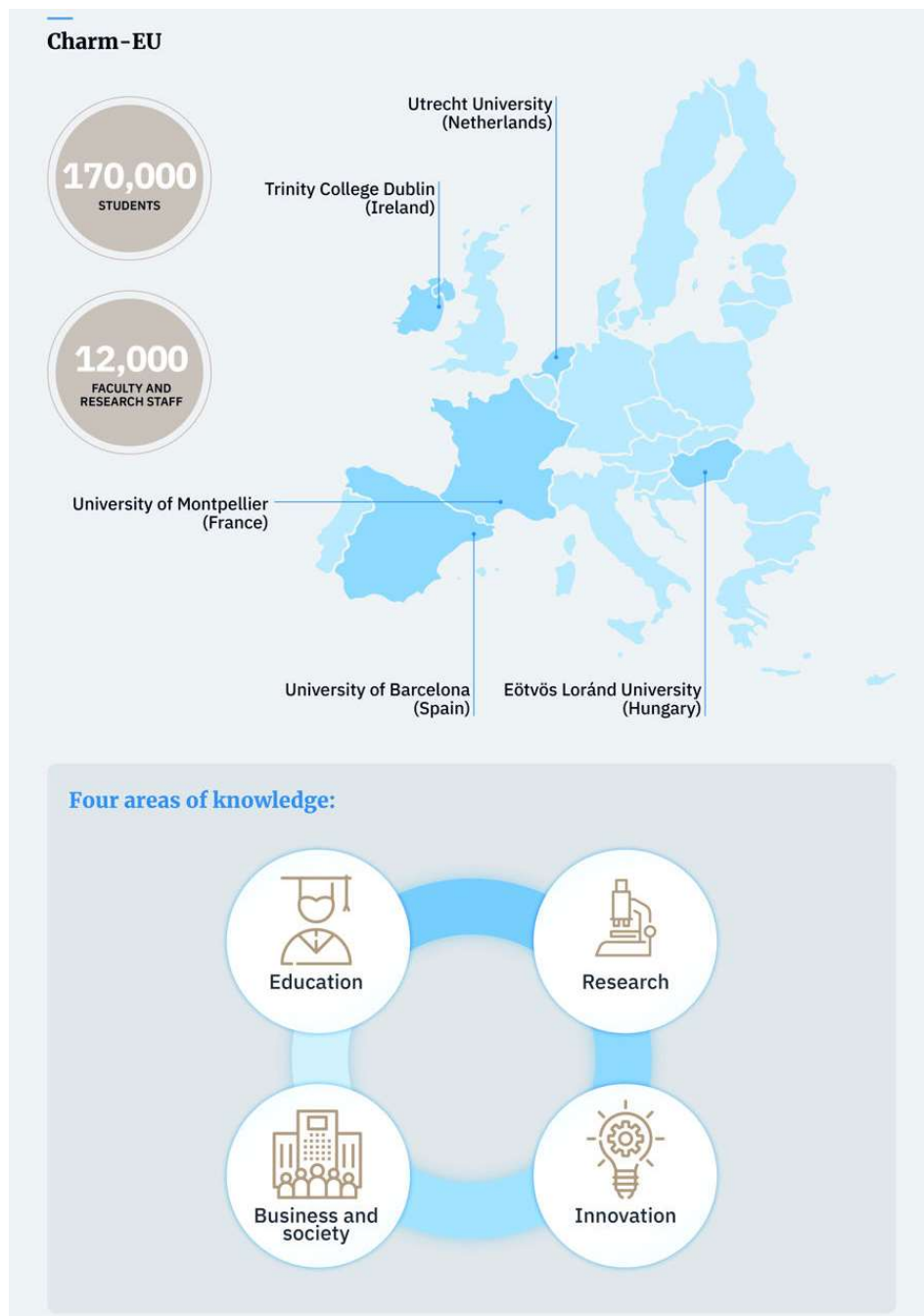


Figure 1. CHARM-EU Members and Areas of Knowledge (source: UB).

European Universities need to strategically rethink and contribute to define the role of Europe in the 21st century when the Planet faces unprecedented global challenges. Our future depends on our capacity to Reconcile Humanity with the Planet and, for this, we need a transformative European research and educational experience. CHARM-EU believes that the EU Future University is a deeply interconnected University – connected to other universities and non-academic sectors; and having its internal support structures working in a connected way. Such a university must adapt quickly to evolve from being traditional and independent to embrace a collaborative approach and become game changers. The CHARM-EU alliance is an example of the creation of such a long-term partnership that aims to systematically develop connected principles and action plans for better value co-creation and social engagement to deliver innovative education and research solutions to societal challenges.

The above principles converge in the TORCH Project, as it will help CHARM-EU to become a complete European University by enhancing the academic and research networks already started with the Erasmus+ Project. The TORCH project builds up the R&I dimension of CHARM-EU, and will drive impact at three different levels: alliance level, institutional level and societal level, with priorities in accelerating and catalyzing processes of institutional change, in stepping up the support to Gender Equality in R&I policy and in exploring and supporting citizen science.

The future R&I dimension, based in three interconnected stages, represents three open questions: What, How and With Whom. The What focus on the challenges at which CHARM-EU will drive its efforts. Three thematic areas, related with the SDGs, have been proposed as a start aligned with the learning areas identified for the CHARM-EU pilot (i. Food, Water and Life&Health; ii. Biodiversity, Environment and Climate Change; iii. (In)Equality, Economic Growth and Governance). The How is the approach to these challenges, CHARM-EU will build its R&I upon the principles of Responsible Research and Innovation (RRI) and Open Science. Finally, the With Whom will foster transdisciplinary and interculturality through Cooperation and Engagement with other sectors (Figure 2).

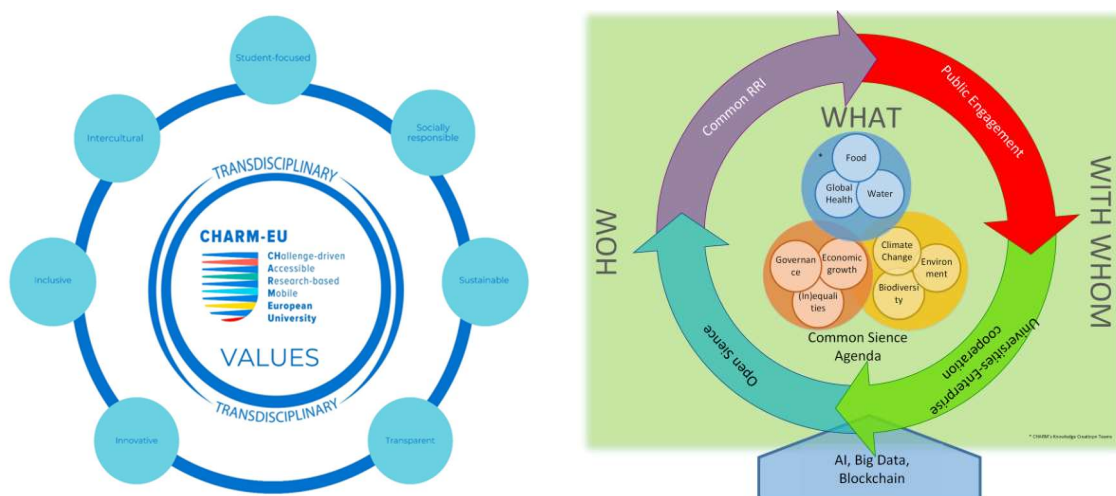


Figure 2. CHARM-EU core values (left) and R&I dimension model (right).

The general objective of the TORCH Project, building up CHARM-EU's R&I common agenda, is framed within the CHARM-EU's aforementioned RRI cross cutting principles and transformation modules, and encompasses several specific objectives, such as:

- Reinforcing the central role of universities in the creation/generation of knowledge and its role as promoters of trustworthy information and scientific truth through critical and evidence-based thinking.
- Promoting societal trust in universities through greater involvement of societal actors and citizens in the research and innovation process and through ensuring high standards of research integrity and scientific ethics.
- Developing a transformative agenda committed with 3 cross cutting principles of RRI: Interdisciplinarity/Transdisciplinarity, Gendered Innovation and Ethics and Integrity.
- Circulating and disseminating knowledge through Open science.
- Making science more responsive to society's needs and demands through the design of a Common Science Agenda aligned with the Sustainable Development Goals, and enhance transparency of scientific activities through the creation of Knowledge Creating Teams (KCTs), to strengthen relations between researchers and all interested stakeholders, e.g. citizens, NGOs, municipalities, business, etc.
- Promoting the economic growth based in the transformation of knowledge with and for society, keeping the social and environmental sustainability as constraints.
- Designing a durable and independent economic sustainability common strategy at a long term through the review of the existent financing instruments at regional, national and European level and through proposing recommendations to the different governance institutions.

The overall methodology to implement the TORCH Project is divided in three parts: governance and management; transformative agenda design and initial implementation; and communication, dissemination and training. The project is managed and governed by the following governing bodies:

- **Project management Team (PMT):** The PMT, chaired by the coordinator (UB), is responsible for the overall implementation and monitoring of the project. The PMT is composed by the Work Package leaders, and reports to the Vice-Rector's Committee. The work package leaders are ultimately responsible for delivery of the work package scope of work, and specified deliverables.
- **Work Package (WP) Teams:** Each work package is composed with a specific team composed by experts on the field and technical support. There is a balance of leadership and dedication of each of the partners of the Alliance and all partners participate in all work packages.
- **Quality Committee:** The role of this committee is to have an external evaluation on the quality of the deliverables.

- **Vice-rectors Committee:** Composed by one vice-rector per university, and created to ensure the relation between partners in terms of strategy, communication, coordination among CHARM-EU and TORCH projects, this committee monitors the synergies and coordination needs of both projects.
- **Rector's Assembly:** The Rectors Assembly supports the overall implementation of both projects.
- **Project Management Office of CHARM-EU:** Part of the CHARM-EU structure supports the TORCH project in terms of some administrative support, finance supervision and communication without charging the cost. This team counts with a specific project manager for TORCH and an administrative.

The Project will be fully carried out by the members of the CHARM-EU Alliance (Table 1), and is composed by 11 different WPs, as listed in Table 3, and briefly described below.

Table 1. TORCH list of partners (the project is coordinated by the University of Barcelona).

Name	Acronym	Country
Universitat de Barcelona	UB	Spain
College of the Holy & Undivided Trinity of Queen Elizabeth Near Dublin	TCD	Ireland
Universiteit Utrecht	UU	Netherlands
Eötvös Loránd Tudományegyetem	ELTE	Hungary
Université de Montpellier	UM	France

Table 2. TORCH list of Work Packages (WP).

WP No	WP Title	WP Leader
WP1	Governance and Project Management - 1	UB
WP2	Governance and Project Management - 2	UB
WP3	Cross Cutting Principles	TCD
WP4	Common Science Agenda	UB
WP5	Strengthening Cooperation Between Universities and Enterprises	UM
WP6	Mainstreaming of Comprehensive Open Science Practices	ELTE
WP7	Public Engagement	UU
WP8	Common Policies and Strategies	TCD
WP9	Actions Plans and Pilots	ELTE
WP10	Communication and Dissemination - 1	UB
WP11	Communication and Dissemination - 2	UB

WP1 and **WP2**, led by the UB, focus on '**Governance and Project Management**'. The overall objective of these WPs is twofold: to lead the Project according to the shared values, vision, and strategy of the CHARM-EU alliance, and in coordination with the work and results of the

ongoing project on its education dimension (ERASMUS+); and to manage the organizational, technical, administrative, and financial matters of the project.

WP3, 'Cross Cutting Principles', led by the TCD, aims to understand engagement on Interdisciplinarity/Transdisciplinarity, Research Ethics and integrity and Gendered Innovation by identifying current existing practices in the alliance in each of these areas and to identify best practices to produce an individualized (for each alliance member) gap analysis for each of these elements. It also focuses on generating knowledge around the points of connectivity between the three cross cutting areas in terms of current practices, best practice and gap analysis, as well as in providing perspectives on how additional gaps would need to be overcome to move to an inter-institutional best practice approach to these cross-cutting actions.

WP4, led by the UB and entitled '**Common Science Agenda**' is devoted to develop the list of challenges the CHARM-EU alliance faces in each thematic area, from institutions strengths and complementarity, taking into consideration the state-of-the-art, the financing mechanisms, barriers and common infrastructure needed to implement them.

WP5 on '**Strengthening cooperation between universities and enterprises**', coordinated by the UM, will develop strategies to connect universities with various other actors of the innovation ecosystem, notably business to foster entrepreneurship, uptake of new technologies and innovation, and to partner with investors to facilitate access to finance. The objective is to give partnership and transfer activities a new dynamic by propelling them on a European scale.

'Mainstreaming of comprehensive Open Science practices' (**WP6**, led by ELTE) aims to support a more innovative Europe, to democratize scientific knowledge, and to address the main global challenges of the 21st century in harmony with the challenge-driven and research-based principle characteristics of the CHARM-EU Alliance. It will put emphasis on developing the Open Science Scope and the design of an Open Science Community Dashboard.

WP7, coordinated by the UU, under the title '**Public Engagement**', intends to collect and share existing modalities and practices for stimulating co-creation of challenge driven research and innovation with societal stakeholders and to further "democratization of science". Furthermore, it aims to collect and share existing practices to balance between mono-disciplinary, excellence driven research and global challenge driven transdisciplinary research and innovation.

'Common Policies and Strategies' define **WP8**, led by the TCD, which will develop integrated RRI strategies and policies within the CHARM-EU Alliance. This WP is focused on the impact of an Interconnected RRI on research assessment, on guiding the development of action plans and pilots to progress RRI principles, and on providing content and guidance for training material for the Alliance community.

The overall objective of **WP9, 'Actions plans and pilots'**, led by ELTE, is to initiate the institutional transformation of member universities and of CHARM-EU R&I initial implementation, by testing and implementing some specific actions resulting either from the

strategy building work of WP8. The activities carried out in WP9 are meant to realize examples of the interconnected operation of the transformative objectives represented by the individual WPs of the project, such as short-term actions that combine social engagement with academia-business cooperation. Focus will be on piloting activities which connect as many aspects of CHARM-EU member institutions' common R&I agenda and joint strategies as possible, involving the widest possible range of stakeholders from the social and entrepreneurial sectors.

'**Communication and Dissemination**', **WP10** and **WP11** (led by the UB), will define and implement a comprehensive strategy to maximize both, the communication and dissemination of the project and its results. To this purpose, target audiences consist of R&I organizations at European and other international levels, with strong emphasis on European universities and their major stakeholders, including the whole citizenship and the media to create public awareness around the action. This WP will constitute a continuous and effective link between the alliance and our stakeholders, to ensure the maximum level of engagement and commitment with the proposed R&I model and transformation. Cooperation with other European Alliances will be also organized through WP10 and WP11.

Finally, the expected impact derived from the TORCH Project can be divided into three main aspects:

- Impact at Alliance level. TORCH will have, at the end of the project, a strategy and common policies to develop its own R&I dimension.
- Impact at University level. Each institution forming the alliance will progress its pathway to transformation based on TORCH's transformative agenda.
- Impact at social level. The future R&I agenda, will impact society through its driving forces, transdisciplinarity and interculturality.

1. KICK-OFF MEETING EXECUTIVE SUMMARY

The TORCH Project, as stated in the previous section, shapes the CHARM-EU's R&I dimension, through developing a challenge-driven transformative agenda based on a transdisciplinary and intercultural RRI vision, laying its foundation in three cross cutting principles of RRI: Interdisciplinarity/Transdisciplinarity, Gendered Innovation, and Ethics and Integrity; and on four transformational modules: establishing a common R&I agenda and action plan; reinforcing cooperation with non-academic actors; mainstreaming of comprehensive Open Science practices; and involvement of citizens, civil society and public/cities authorities in R&I.

The Kick-Off Meeting (KoM) is the first general meeting of the TORCH Project and is focused on launching the project, coordinating workflows among and within WPs, and defining the framework, steps and actions to be taken in order to achieving its objectives.

Organized by the TORCH Management Team, the TORCH KoM specifically served the following purposes:

- Presenting the Project's overview to all team members and parties involved.
- Introducing governance, partners and team members of the Project, as well as establishing lines of communication.
- Learning from the EC Officers on the Project monitoring/evaluation workflow.
- Establishing the project objectives, tasks, and WPs, along with the secondments, tasks, activities and deliverables for the first period of the Project.
- Holding a Closed/Working Session among the Project management Team and WP Leaders on financial and functional issues of the Project.

This Deliverable summarizes the two-session meeting held online on February 8-9, 2021, with participation of various representatives of the CHARM-EU Alliance members and project beneficiaries: TORCH WP team members, the CHARM-EU Project Management team, members of the Knowledge Creating Teams, and the CHARM-EU Academic Board, as well as the European Commission's DGR&I Policy Officer and the REA Project Officer. It outlines the KoM Session 1, KoM Session 2, and the Conclusions & Next Steps derived from the meeting¹.

This Deliverable is defined as a Public Report in the Project's Grant Agreement, so no confidential information that might have been presented or discussed in the KoM will be disclosed here.

2. KICK-OFF MEETING – SESSION 1

The following comprises the most relevant information presented during the KoM first session:

- Date: February 8, 2021. 15:00-17:00 (CET).
- Venue: Online meeting.
- Type: Open Session.
- No. of Participants and Attendants²: 63.
- Agenda³:
 - **Inaugural Session: Introduction and Welcome.** Speakers: Prof. Joan Guàrdia (Rector, UB), Prof. Jordi García (Vice-rector of Research, UB).
 - **Presentation from the DGR&I: A new ERA for R&I, Empowering Universities.** Speaker: Stijn Delaure (Policy Officer, DGR&I, EC).

¹ Detailed information on the Agenda, Participants and Presentations can be found in Annex I, Annex II, and Annex III, respectively.

² See Annex II

³ See Annex I

- **Presentation from the Research Executive Agency (REA): Project Officer Presentation on Grant Management and TORCH Project Monitoring/Evaluation.** Speaker: Alina-Maria Bercea (Project Officer, REA, EC).
- **Presentation of the Project Objectives: Open discussion.** Speaker: Prof. Raul Ramos (Vice-Dean of Research, Faculty of Economics and Business, UB; TORCH Project Coordinator, WP1 & WP2 Leader).

Prof. Joan Guàrdia (Rector, UB) opens the meeting by introducing the Project and welcoming all team members, participants and attendants. From then, Prof. Jordi García (Vice-rector of Research, UB) takes the baton and will act as the meeting's host, firstly introducing the initial presentations.

Stijn Delaure (Policy Officer, DGR&I, EC), with a presentation entitled 'A new ERA for R&I, Empowering Universities' showcases the European Research Area (ERA) within the H2020 framework.

Alina-Maria Bercea (Project Officer, REA, EC) follows with a presentation focused on the Grant Management and TORCH Project Monitoring/Evaluation, which establishes the future workflow and communication procedures among the Project Team and the EC Project Officer.

Prof. Raúl Ramos (Vice-Dean of Research, Faculty of Economics and Business, UB), TORCH Project Coordinator and WP1 & WP2 Leader, then presents the 'Project Objectives', and shows the context in which the Project will operate (CHARM-EU Alliance), along with the Project aims (general and specific), the cross-cutting principles of RRI that will apply, and the challenge-driven thematic areas in which the Project will focus (Food, Water, Life & Health; Biodiversity, Environment, Climate Change; Inequalities, Economic Growth, Governance). Briefly introduces the different WPs and expected results and impacts of TORCH.

3. KICK-OFF MEETING – SESSION 2

The following comprises the most relevant information presented during the KoM second session. It was split into two different sessions (first one, open to all members and participants; second one, restricted to Vice-Rectors, Work Package Leaders and Project Managers):

- Date: February 9, 2021. 10:00-11:15 (CET), Open Session. 11:30-13:30 (CET), Closed Session.
- Venue: Online meeting.
- Type: Open Session (first half); Closed Session (second half).
- No. of Participants and Attendants⁴: 37.
- Agenda⁵:

⁴ See Annex II

- **Governance of the Project** (open session). Speaker: Prof. Raul Ramos (Vice-Dean of Research, Faculty of Economics and Business, UB; TORCH Project Coordinator, WP1 & WP2 Leader).
- **Work Packages Brief Presentation** (open session). Speakers: Prof. Raul Ramos (Vice-Dean of Research, Faculty of Economics and Business, UB; TORCH Project Coordinator, WP1 & WP2 Leader); Prof. Lorraine Leeson (Associate Dean of Research, TCD; WP3 Leader); Prof. Albert Diaz (Rector's Delegate for Research Institutes, UB; WP4 Leader); Mr. Gäetan Lan Sun Luk (Director of Innovation and Associations, UM; WP5 Leader); Dr. Balázs Aczél (Vice-Dean of Research, Faculty of Education and Psychology, ELTE; WP6 Leader); Dr. Bas Leeflang (Project Manager, UU); Dr. Nina Shiel (Research Fellow, TCD); Dr. Ferenc Takó (Head of the International Office, Rector's Cabinet, ELTE); Ms. Meritxell Chaves (CHARM-EU Alliance Manager, UB).
- **Presentation of the Budget, Reporting and Payment Calendar** (closed session). Speaker: Ms. Agustina Calabrese (CHARM-EU Financial Manager, UB).
- **Project's Planning Process** (closed session). Speaker: Ms. Meritxell Chaves (CHARM-EU Alliance Manager, UB).

Prof. Raul Ramos (Vice-Dean of Research, Faculty of Economics and Business, UB), TORCH Project Coordinator and WP1 & WP2 Leader, opens the session presenting the governance bodies and managing procedures to be applied during the project's life, as well as the WP leaders.

The presentation of the different WPs is taken by the corresponding WPs leader or team member. Each one of the presentations goes over the main points of each WP, such as objectives and tasks, deliverables and time schedule⁵. WP1 and WP2 (Governance and Project Management) are presented by the WP Leader Prof. Raúl Ramos (UB). WP3 (Cross-Cutting Principles) is explained by WP Leader Prof. Lorraine Leeson (TCD). WP4 (Science Agenda) is introduced by WP Leader Prof. Albert Diaz (UB), who gets into details about the three thematic areas of the Scientific Agenda. WP5 (Strengthening Cooperation Between Universities and Enterprises) is presented by WP5 Leader Mr. Gäetan Lan Sun Luk (UM). WP6 (Mainstreaming of Comprehensive Open Science Practices) is introduced by WP Leader Dr. Balázs Aczél (ELTE). WP7 (Civil Engagement) is presented by Dr. Bas Leeflang (UU). WP8 (Common Policies and Strategies) is showcased by Dr. Nina Shiel (TCD). WP9 (Action Plans and Pilots) is presented by Dr. Ferenc Takó (ELTE). Finally, WP10 and WP11 (Communication and Dissemination) are presented by Ms. Meritxell Chaves (CHARM-EU Alliance Manager, UB).

The second part of Session 2 serves as a working meeting, and is restricted to Vice-Rectors, Work Package Leaders and Project Managers. Initially, financial aspects of the Project are presented by Ms. Agustina Calabrese (CHARM-EU Financial Manager), with regard to the Project's budget, payment calendar and reporting. Other practical issues, such as the calendar for the detailed planning process and milestones, management sharing tools, and operational to-be-taken next steps are presented by Ms. Meritxell Chaves (CHARM-EU Alliance Manager,

⁵ See Annex I

⁶ See Annex III for more details on each WP presentation.

UB). Finally, there is a Q&A space to discuss practical aspects among the Project management team.

4. CONCLUSIONS & NEXT STEPS

TORCH organized a two-session KoM, held online on February 2021, in order to officially launch the Project. It included two open and informative sessions, and a closed working session, that allowed all partners, WP and team members, as well as other participants, to learn about the operational and structural aspects of the Project's development.

The objectives, organization and management framework of the Project were presented during the first informative session, along with the input from the EC on the Project's monitoring and evaluation. Governance and WPs were discussed in detail during the second session, with the participation of all the Alliance members involved in TORCH. The Project Management Team also had the chance to hold its first working meeting.

The Project aims are therefore well established after the meeting, together with the WP structure, tasks and schedules. There is a strong commitment among all the Alliance members, who are aligned and motivated to collaborate in facing the Project's challenges to achieve its goals. Workflows, tools, and project coordination are also set and ready and ready.

The next immediate steps involve completing some of the WP working teams (WP7, WP10, WP11), carrying out the first Project Management Team meeting (February 24, 2021), and defining the Quality Committee. Additionally, those WPs which run from the start of the Project initiate now their work in close collaboration with the the Project Coordination team. All of them plan to or have already organized an internal WP Kick-Off meeting.

Any potential changes the WPs teams might experiment would be reported in advance to the EC Research Executive Agency via the Project Officer, as stated in the Grant Agreement.

ANNEX I. MEETING AGENDA

Transforming Open Responsible Research and Innovation through CHARM - TORCH Kick-Off Meeting, February 8-9, 2021 (CET). Online (platform: Teams).

SESSION 1 – February 8, 2021. 15:00-17:00 (CET). Open Session.

· Inaugural Session: Introduction and Welcome	
Prof. Joan Guàrdia (Rector, UB)	10 min
Prof. Jordi García (Vice-Rector of Research, UB)	
· Presentation from the DGR&I: A new ERA for R&I, Empowering Universities	20 min
Stijn Delaure (Policy Officer, DGR&I, EC)	
· Presentation from the Research Executive Agency (REA): Project Officer Presentation on Grant Management and TORCH Project Monitoring/Evaluation	60 min
Alina-Maria Bercea (Project Officer, REA, EC)	
· Presentation of the Project Objectives: Open discussion	
Prof. Raul Ramos (Vice-Dean of Research, Faculty of Economics and Business, UB; TORCH Project Coordinator, WP1 & WP2 Leader)	30 min

SESSION 2 – February 9, 2021. 10:00-11:15 (CET). Open Session.

· Governance of the Project	
Prof. Raul Ramos (Vice-Dean of Research, Faculty of Economics and Business, UB) (TORCH Project Coordinator, WP1 & WP2 Leader).	15 min
· Work Packages Brief Presentation	
WP1 & WP2. Prof. Raul Ramos (Vice-Dean of Research, Faculty of Economics and Business, UB; TORCH Project Coordinator, WP1 & WP2 Leader).	
WP3. Prof. Lorraine Leeson (Associate Dean of Research, TCD; WP3 Leader)	
WP4. Prof. Albert Diaz (Rector's Delegate for Research Institutes, UB; WP4 Leader).	
WP5. Mr. Gäetan Lan Sun Luk (Director of Innovation and Associations, UM; WP5 Leader)	60 min
WP6. Dr. Balázs Aczél (Vice-Dean of Research, Faculty of Education and Psychology, ELTE; WP6 Leader)	
WP7. Dr. Bas Leeflang (Project Manager, UU)	
WP8. Dr. Nina Shiel (Research Fellow, TCD)	
WP9. Dr. Ferenc Takó (Head of the International Office, Rector's Cabinet, ELTE)	
WP10 & WP11. Ms. Meritxell Chaves (CHARM-EU Alliance Manager, UB)	

SESSION 2 – February 9, 2021. 11:30-13:30 (CET). Closed Session (Vice-Rectors, Work Package Leaders, Project Managers).

· Presentation of the Budget, Reporting and Payment Calendar Ms. Agustina Calabrese (CHARM-EU Financial Manager, UB)	10 min
· First Year Milestones: Calendar for the Detailed Planning Process and Methodology Ms. Meritxell Chaves (CHARM-EU Alliance Manager, UB)	30 min
· Shared Tools for Management Meritxell Chaves (CHARM-EU Alliance Manager, UB)	20 min
· Next Steps Meritxell Chaves (CHARM-EU Alliance Manager, UB)	30 min
· Questions and Answers	30 min

ANNEX II. MEETING LIST OF PARTICIPANTS & ATTENDANTS

SESSION 1 – February 8, 2021. 15:00-17:00 (CET). Open Session.

Name	Affiliation
Aczél, Balázs Zoltán	Vice-Dean of Research, Faculty of Education and Psychology (ELTE); WP6 Leader
Alexander, Doris	Associate Director for European Engagement (TCD)
Andres Lacueva, Maria Cristina	UB
Barkhoff, Juergen	Vice-Provost Chief Academic Officer (TCD)
Bélteki Gál, Anikó	ELTE
Bercea, Alina-Maria	Project Officer, REA (EC)
Boix, Carles	UB
Byrne, Jake	TCD
Calabrese Gómez, Agustina	Financial Manager CHARM-EU (UB)
Camps Gaset, Montserrat	UB
Caron, Patrick	Vice-President for International Affairs (UM)
Casamitjana Badia, Nuria	UB
Chaves, Meritxell	CHARM-EU Alliance Manager (UB)
Chazal, Nathalie	UM
Comiskey, Catherine	TCD
Cruz Gatell, Montse	UB
Delacourt-Gollain, Celine	UM
Delaure, Stijn	Policy Officer, DGR&I (EC)
Diaz, Albert	Rector's Delegate for Research Institutes (UB); WP4 Leader
Donnellan, Claire	TCD
Erdei, Luca Alexa	ELTE
Font Guedes, Nicole	Communication Manager CHARM-EU (UB)
Gallagher, Silvia	TCD
García Fernández, Jordi	Vice-Rector of research (UB)
Girones Llop, Rosina	UB
Guàrdia Olmos, Joan	Rector (UB)
Guillen, Montserrat	UB
Hamar, Imre	Vice-rector for International Affairs (ELTE)
Hernández, Patro	Project Manager CHARM-EU (UB)
Herranz Loncan, Alfonso	UB
Kóré, Veronika	Head Of Science Policy Office (ELTE)
Labastida i Juan, Ignasi	UB
Labat, Benedicte	UM
Lamuela Raventos, Rosa Maria	UB
Lan Sun Luk, Gaëtan	Director of Innovation and Associations (UM); WP5 Leader

Leeflang, B.R. (Bas)	Project Manager (UU)
Leeson, Lorraine	Associate Dean of Research (TCD); WP3 Leader
Llasat, Carmen	UB
Llorca, Jaime	Project Manager (UB)
Lorentz, Julien	UM
Magyari, Enikő Katalin	Vice-Rector for Research (ELTE)
Marfany, Gemma	UB
Martín-Vide, Javier	UB
Miedema, F. (Frank)	Vice-Rector of Research (UU)
Mihucz, Viktor Gábor	ELTE
Németh, Katalin Anna	ELTE
Palomar Martínez, Armando Javier	UB
Perelló, Josep	UB
Pernelle, Camylle	UM
Pippo, Elea	UM
Puig Llobet, Montserrat	UB
Ramos, Raul	Vice-Dean of Research, Faculty of Economics and Business (UB); TORCH Project Coordinator, WP1 & WP2 Leader
Royuela, Vicente	UB
Sans Serra, Francisco Javier	UB
Serrano, Mònica	UB
Shiel, Nina	Research Fellow (TCD)
Soler Gallart, Marta	UB
Spillane, Conor	Project Manager (TCD)
Suibra, Gilles	UM
Takó, Ferenc	Head of the International Office, Rector's Cabinet (ELTE)
Tortosa Moreno, Avelina	UB
van Os, W.H. (Willemijn)	UU
Vijge, M.J. (Marjanneke)	UU; WP7 Leader

SESSION 2 – February 9, 2021. 10:00-11:15 (CET). Open Session.

Name	Affiliation
Aczél, Balázs Zoltán	Vice-Dean of Research, Faculty of Education and Psychology (ELTE); WP6 Leader
Alexander, Doris	Associate Director for European Engagement (TCD)
Andres Lacueva, Maria Cristina	UB
Bélteki Gál, Anikó	ELTE
Boix, Carles	UB
Borrell, Valerie	UM
Camps Gaset, Montserrat	UB

Chaves, Meritxell	CHARM-EU Alliance Manager (UB)
Comiskey, Catherine	TCD
Cruz Cazares, Claudio	UB
Cruz Gatell, Montse	UB
Girones Llop, Rosina	UB
Guillen Estany, Montserrat	UB
Hernández, Patro	Project Manager CHARM-EU (UB)
Herranz Loncan, Alfonso	UB
Kóré, Veronika	Head Of Science Policy Office (ELTE)
Labastida i Juan, Ignasi	UB
Lamuela Raventos, Rosa Maria	UB
Lan Sun Luk, Gaëtan	Director of Innovation and Associations (UM); WP5 Leader
Leeflang, B.R. (Bas)	Project Manager (UU)
Leeson, Lorraine	Associate Dean of Research (TCD); WP3 Leader
Llorca, Jaime	Project Manager (UB)
Lorentz, Julien	UM
Marfany, Gemma	UB
Mihucz, Viktor Gábor	ELTE
Ouchan, F. (Fedoua)	UU
Perelló, Josep	UB
Pippo, Elea	UM
Ramos, Raul	Vice-Dean of Research, Faculty of Economics and Business (UB); TORCH Project Coordinator, WP1 & WP2 Leader
Royuela, Vicente	UB
Sans Serra, Francisco Javier	UB
Serrano, Mònica	UB
Soler Gallart, Marta	UB
Spillane, Conor	Project Manager (TCD)
Takó, Ferenc	Head of the International Office, Rector's Cabinet (ELTE)
Tortosa Moreno, Avelina	UB
Vernhet, Alexandre	Vice-President for Management and Monitoring (UM)
Vijge, M.J. (Marjanneke)	UU; WP7 Leader

ANNEX II. MEETING PRESENTATIONS

(see Annex I for more details on speakers and programme)

SESSION 1 – February 8, 2021. 15:00-17:00 (CET). Open Session.

- Inaugural Session: Introduction and Welcome
- Presentation of the Project Objectives: Open discussion

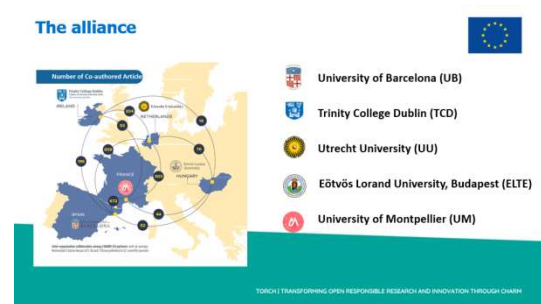


TORCH
Transforming Open Responsible Research and Innovation through CHARM

KICK-OFF MEETING
February 8th & 9th 2021

THE PROJECT HAS RECEIVED FUNDING FROM THE EUROPEAN UNION UNDER THE RESEARCH AND INNOVATION PROGRAMME UNDER GRANT AGREEMENT No 101019151

UNIVERSITAT DE BARCELONA, Trinity College Dublin, Utrecht University, EDITH COOPER UNIVERSITY, UNIVERSITY OF MONTPELLIER



The alliance

Number of Co-authored Article

- University of Barcelona (UB)
- Trinity College Dublin (TCD)
- Utrecht University (UU)
- Eötvös Loránd University, Budapest (ELTE)
- University of Montpellier (UM)

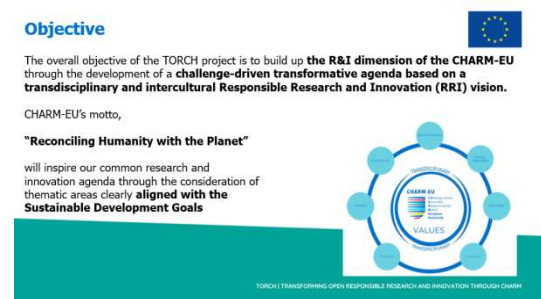
TORCH | TRANSFORMING OPEN RESPONSIBLE RESEARCH AND INNOVATION THROUGH CHARM



Associate Partners & Supporting Entities

- Municipality of Utrecht
- Province of Utrecht
- Utrechtinc
- AxLR, SATT Occitane Mediterranee, Montpellier
- Coimbra Group
- Library & Information Center, Hungarian Academy of Sciences
- Taula Entitats del Tercer Sector de Catalunya
- Barcelona Chamber of Commerce, Industry and Navigation
- Barcelona City Council
- Dublin City Council
- National Research Development and Innovation Office, Hungary
- OpenAIRE
- SHAPE-ID

TORCH | TRANSFORMING OPEN RESPONSIBLE RESEARCH AND INNOVATION THROUGH CHARM



Objective

The overall objective of the TORCH project is to build up **the R&I dimension of the CHARM-EU** through the development of a **challenge-driven transformative agenda based on a transdisciplinary and intercultural Responsible Research and Innovation (RRI) vision**.

CHARM-EU's motto,
"Reconciling Humanity with the Planet"

will inspire our common research and innovation agenda through the consideration of thematic areas clearly **aligned with the Sustainable Development Goals**

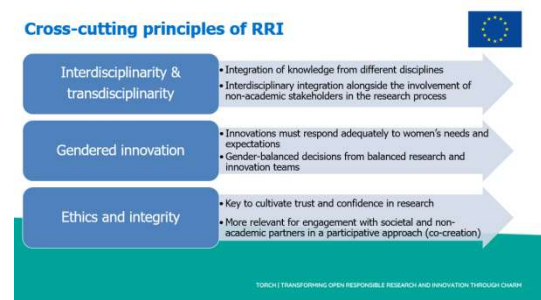
TORCH | TRANSFORMING OPEN RESPONSIBLE RESEARCH AND INNOVATION THROUGH CHARM



Specific objectives

- To **reinforce the central role of universities in the creation/generation of knowledge** and its role as promoters of trustworthy information and scientific truth through critical and evidence-based thinking
- To promote societal trust in universities through **greater involvement of societal actors and citizens in the research and innovation process** and through ensuring high standards of research integrity and scientific ethics
- To **make science more responsive to society's needs and demands**
- To develop a **transformative Common Science Agenda** committed with principles of **Responsible Research and Innovation** and **circulated and disseminated through Open Science**

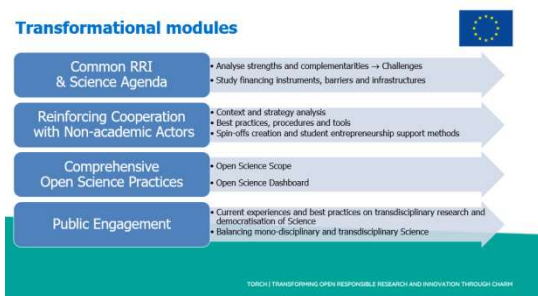
TORCH | TRANSFORMING OPEN RESPONSIBLE RESEARCH AND INNOVATION THROUGH CHARM



Cross-cutting principles of RRI

- Interdisciplinarity & transdisciplinarity**
 - Integration of knowledge from different disciplines
 - Interdisciplinary integration alongside the involvement of non-academic stakeholders in the research process
- Gendered innovation**
 - Innovations must respond adequately to women's needs and expectations
 - Gender-balanced decisions from balanced research and innovation teams
- Ethics and integrity**
 - Key to cultivate trust and confidence in research
 - More relevant for engagement with societal and non-academic partners in a participative approach (co-creation)

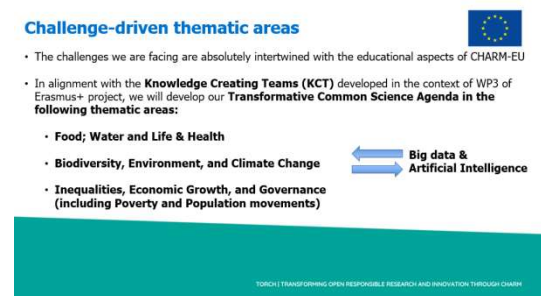
TORCH | TRANSFORMING OPEN RESPONSIBLE RESEARCH AND INNOVATION THROUGH CHARM



Transformational modules

- Common RRI & Science Agenda**
 - Analyse strengths and complementarities → Challenges
 - Study financing instruments, barriers and infrastructures
- Reinforcing Cooperation with Non-academic Actors**
 - Context and strategy analysis
 - Best practices, procedures and tools
 - Spin-offs creation and student entrepreneurship support methods
- Comprehensive Open Science Practices**
 - Open Science Scope
 - Open Science Dashboard
- Public Engagement**
 - Current experiences and best practices on transdisciplinary research and democratisation of Science
 - Balancing mono-disciplinary and transdisciplinary Science

TORCH | TRANSFORMING OPEN RESPONSIBLE RESEARCH AND INNOVATION THROUGH CHARM



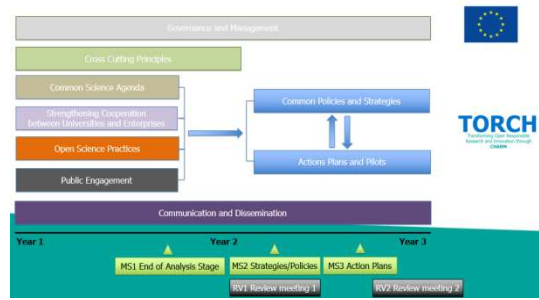
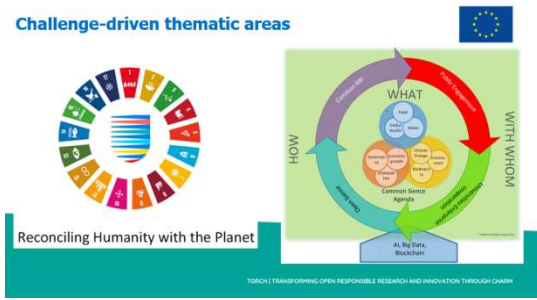
Challenge-driven thematic areas

- The challenges we are facing are absolutely intertwined with the educational aspects of CHARM-EU
- In alignment with the **Knowledge Creating Teams (KCT)** developed in the context of WP3 of Erasmus+ project, we will develop our **Transformative Common Science Agenda in the following thematic areas:**
 - **Food; Water and Life & Health**
 - **Biodiversity, Environment, and Climate Change**
 - **Inequalities, Economic Growth, and Governance (including Poverty and Population movements)**

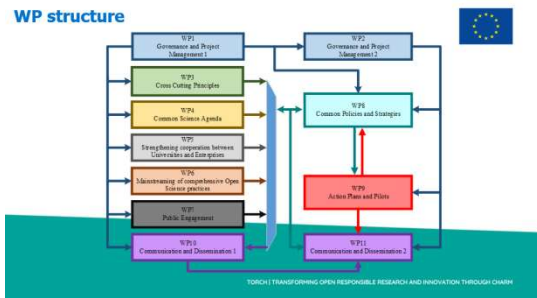
Big data & Artificial Intelligence

TORCH | TRANSFORMING OPEN RESPONSIBLE RESEARCH AND INNOVATION THROUGH CHARM

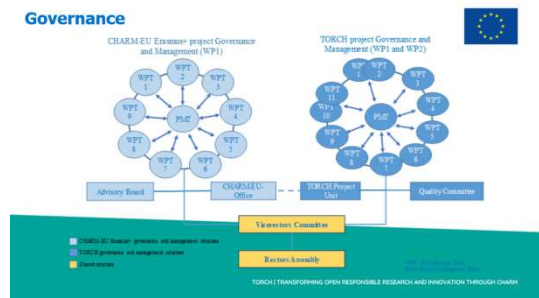
Challenge-driven thematic areas



WP structure



Governance



Expected results

- **Best practices and GAP analysis for each transformational module in each university. Transforming current R+I practice/model**
- The **external perspective/contribution** documented by the Reports of Annual Forums
- **Common R&I agenda 2023-2026** and the roadmap
- The **R&I governance model** for CHARM-EU
- **KCT created and operative** including academics from different fields, business and civil society members
- **Dissemination and exploitation activities**

Expected impacts & indicators

- **At the Alliance level**
 - A joint R&I policy and strategy for CHARM-EU
 - Creation of KCT. The diversity of disciplines involved. Number of researchers, number of business and civil society members involved
 - A proposal submitted to Horizon Europe by the alliance
- **At the University level**
 - Number of transformation actions undertaken in each institution coming from the GAP analysis
 - Number of researchers involved in transdisciplinary KCT
 - Adoption and increase of the standard indicators of Open Science
 - Progress during the pilots' stage and after the conclusion of the project implementing best practices and pilots

Expected impacts & indicators

- **At the Social level**
 - Better research for the benefit of society
 - More trust in research and the linkage to policy development/implementation
 - Increasing RRI practices across different sectors
 - Number of dissemination activities and participants at the local level for each institution
 - Number of stakeholders/institutions involved in the activities of the project, action plans and pilots

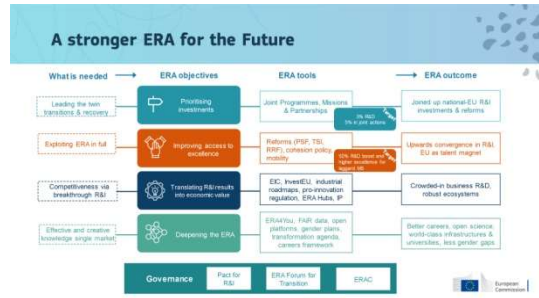
· Presentation from the DGR&I: A new ERA for R&I, Empowering Universities

A new ERA for R&I
Empowering universities

Stijn DELAURE
European Commission, DG Research & Innovation
Academic R&I and research organisations

European Universities
kick-off meeting SwafS-32

European Commission



Shaping the new ERA through 14 actions, including:

- Develop and test a networking framework in support of Europe's research and innovation ecosystems, building on existing capacities, to strengthen excellence and maximise the value of knowledge creation, circulation and use.
- Develop a roadmap of actions for creating synergies between higher education and research, notably building on the dual role of universities.
- Deliver a toolbox of measures to support researchers' careers, through a mobility scheme, trainings and more, in order to make Europe more attractive for talent.

Ecosystem level → **Ecosystem actor level** → **Individual R&I talent level**
 Mapping, knowledge circulation, interconnection, ERA Hubs | Supporting Higher Education sector and surrounding ecosystems | Employment, skills/competences, mobility, career development

European Commission

Deepening the ERA

Fully exploiting universities' potential in the knowledge square

Empowering universities and surrounding ecosystems, as part of key synergy initiatives between EEA and ERA

- Higher Education Transformation Agenda empowering universities to modernise, covering education, R&I and service to society missions
- Toolbox of legal measures facilitating cross-border cooperation
- Investment strategy to deliver on the transformation agenda, in synergy with other EU and national funding programmes
- Protection of academic freedom

Consultation report 'Towards a 2030 vision on the future of universities in Europe' R&I dimension in synergy with education (October 2020), to be continued

European Commission

Achieving a European Education Area by 2025

Transformation of Higher Education sector

European Commission

ERA and EEA joining forces

Higher Education Transformation Agenda

- Consultation process of stakeholders and Member States in 2021**
 - Purpose: empowering the sector in its transformations towards the future
 - Identifying priorities, challenges, needs of higher education sector
 - All missions: education, research, innovation, service to society
- Joint process** (education and R&I together):
 - Open online consultation & invitation to submit papers
 - Targeted consultation meetings with experts, workshops with stakeholders, events
 - Umbrella organisations (HEIs, research organisations, business...), European Universities (pilot alliances), experts from Member States
 - Evaluation of the European Universities initiative politically (as pioneers for the Agenda)
 - Studies on Knowledge ecosystems, European degree, legal measures, investment...

European Commission

Horizon Europe contributing towards a renewed ERA

Pillar 1 Excited Science	Pillar 2 Global Challenges and European Industrial Competitiveness	Pillar 3 Innovative Europe
European Research Council Marie Skłodowska-Curie Actions Research Infrastructures	Health Climate, Clean Air, Circular Economy, Inclusive Society Digital, Industry and Space Climate, Energy and Mobility Food, Bioeconomy, Natural Resources, Agriculture and Environment Joint Research Centres	European Innovation Council European Innovation ecosystems European Institute of Innovation and Technology

Widening Participation and Strengthening the European Research Area

Widening participation and spreading excellence | Reframing and Enhancing the European R&I system

European Commission

Horizon Europe contributing towards a renewed ERA

Widening participation and strengthening the ERA part

- Improving access to excellence**
 - Teaming, Twinning, COST, Excellence hubs, Excellence Initiative for HEIs
 - Balancing brain circulation, networking for research managers, support for Western Balkans
- Prioritising investments**
 - Teaming, Policy Support Facility
 - Support for policy makers
- Translating R&I results into economic value**
 - Excellence Hubs, Teaming
 - Standardisation booster, Innoswide Bridging, IP mgmt
- Deepening the ERA**
 - ERA Chairs, Twinning, COST
 - Empowering universities
 - Strengthening R&I talents
 - Science education & communication
 - Ethics and integrity, gender
 - Open Science

Provisional information, Work Programme under development

European Commission

A NEW ERA FOR RESEARCH AND INNOVATION

For more information please see:

[Press release](#)
[Factsheet](#)
[Video: 'The new European Research Area'](#)
[Communication: A new ERA for Research and Innovation](#)
[Twitter](#)

@EUSciencInnov #EUResearchArea #ResearchImpactEU

European Commission

· Presentation from the Research Executive Agency (REA): Project Officer Presentation on Grant Management and TORCH Project Monitoring/Evaluation

TORCH
 Kick-off Meeting – remote meeting
 8 of February 2021

Alina-Maria Bercea
 Project Officer
 REA.B.5 - Spreading Excellence, Widening Participation,
 Science with and for Society

1. Roles
2. Grant Agreement
3. Lump sum pilot
4. Project monitoring
5. Dissemination, Communication & Exploitation
6. Policy feedback
7. Final remarks

1. Roles

Who's who



2. Grant Agreement

Current status of the GA

- TORCH signed**
- Project started on 1st January 2021
 - All beneficiaries signed their Accession Forms to GA
- Pre-financing payment** EUR 1,730,408.84
- Aim: to provide the beneficiaries with a float
- It remains the property of the EU until the payment of the balance
 - Payments to the Coordinator → Distribution to Partners

→ Project monitoring has started

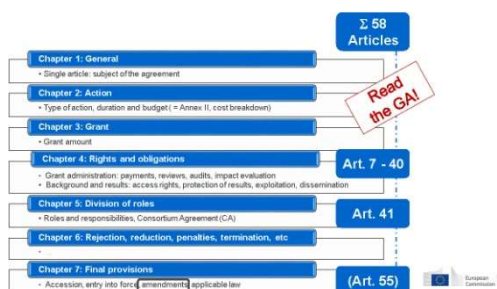
Grant Agreement & Consortium Agreement

- Grant Agreement (GA)**
 Contract between REA (represented by Head of Unit) and consortium (represented by Coordinator, UNIVERSITAT DE BARCELONA) and other beneficiaries, if they signed their "Accession Form"
REA will monitor the GA implementation
- Consortium Agreement (CA)**
- Contract between beneficiaries (NOT REA)
 - Internal rules and relationships (IPR, conflicts etc.)
 - All provisions in the CA conform with the GA
 - Obligatory, to be signed before GA signature
 - **REA will NOT monitor the CA implementation**

GA – Terms and conditions

The answers to most questions are in the Grant Agreement

- Art. 3: The duration of the action will be **36 months** as of 1st of January 2021 ("starting date of the action")
- Art.4.2 Budget transfers
- Art. 5.1: Maximum grant amount is **EUR € 2 163 011.05**
- Art. 20.2: Reporting periods: 2 – RP1 (M1-M18) + RP2 (M19-M36)
- Art.21 Payments and payment arrangements
- Art. 41, 41.1 and 41.2: Roles and responsibilities



GA – Roles & responsibilities

- Coordinator (COO)**

 - first point of contact for REA PO
 - monitors that the Action is implemented properly (progress, funding, compliance with GA/CA)
 - Quality controls and submits deliverables & reports to REA

Beneficiaries

 - carry out the work as described in Annex I (DoA) & Annex II (budget)
 - submit to the COO in good time (data for technical reports)
 - communicates with COO, inform COO of changes

Amendments of the GA

Basic Condition

"The GA may be amended, unless the Amendment entails changes to the GA which would call into question the decision awarding of the grant or breach the principle of equal treatment of applicants."

Who can request GA Amendment

Consortium (Coordinator or Partners) or REA

What can be amended

GA Terms & conditions - only specific data and options, Annex 1 (DoA) and Annex 2 (budget) - in certain cases
Any budget transfer does require an Amendment

→ Consult REA Project Officer in advance (i.e. before officially launching the GA amendment)



3. Lump sum pilot



Why a lump sum pilot call ?

Significant simplification potential

- Despite all simplification, funding based on reimbursement of incurred costs stays complex and error-prone
- Lump sum project funding removes all obligations on actual costs reporting and financial ex-post audits – i.e. a major reduction of administrative burden

Focus on performance

- Shift from focus on financial management and checking costs to focus on scientific-technical content of the projects



Lump sum – Principles (1/2)

Lump sum evaluation and Grant Agreement follow standard approach as much as possible

- Same evaluation criteria
- Same pre-financing and payment scheme
- Reporting periods and technical reporting as today, though focusing on completion of WPs

One lump sum share is fixed in the Grant Agreement for each WP

- This amount is paid when the activities in the WP are completed. As today, payment does not depend on a successful outcome, but on the completion of activities



Lump sum – Principles (2/2)

The Grant Agreement will set out the lump sum (EU funding) corresponding to the full accomplishment of the work committed in Annex 1

Costs actually incurred are not relevant, but who does the work

As in the General MGA linked third parties and international partners must be named in the Grant Agreement

Annex 1 must detail the tasks to be:

- Attributed to each linked third party
- Attributed to each international partner
- Subcontracted



Lump sum – Budget

All budget transfers require an Amendment

	WP1	WP2	WP3	WP4	WP5	WP6	WP7	WP8	Total
Beneficiary A	250.000			50.000	300.000	250.000		300.000	1.150.000
Beneficiary B		250.000	350.000	50.000			180.000	150.000	900.000
Beneficiary C	100.000	100.000		50.000					530.000
Beneficiary D		120.000		50.000			180.000	150.000	420.000
Total	350.000	470.000	350.000	200.000	300.000	530.000	330.000	650.000	3.000.000

Budget transfers acceptable if:

- Work Packages not already completed (and declared)
- Justified by the technical and scientific implementation of the action
- A review confirms that it does not call into question the decision awarding the grant or breach the principle of equal treatment



Lump sum – interim payment (1/2)

Sum of the shares of the lump sum allocated to Work Packages fully completed in the reporting period

	WP1	WP2	WP3	WP4	WP5
Beneficiary A	250.000			50.000	300.000
Beneficiary B		250.000	350.000	50.000	
Beneficiary C	100.000	100.000		50.000	
Beneficiary D		120.000		50.000	
Total	350.000	470.000	350.000	200.000	300.000

Annex 2

	WP1	WP2	WP3	WP4	WP5
Beneficiary A	Completed		Not started	Initiated	
Beneficiary B		Completed	Completed	Not initiated	
Beneficiary C	Completed	Not initiated		Not initiated	
Beneficiary D		Completed		Completed	

State of play at the end of the reporting period



Lump sum – interim payment (2/2)

Sum of the shares of the lump sum allocated to Work Packages fully completed in the reporting period

	WP1	WP2	WP3	WP4	WP5
Beneficiary A	250.000			50.000	300.000
Beneficiary B		250.000	350.000	50.000	
Beneficiary C	100.000	100.000		50.000	
Beneficiary D		120.000		50.000	
Total	350.000	470.000	350.000	200.000	300.000

Annex 2

Payment = 350 000 + 0 + 350 000 + 0 = 700 000 €

Limited to 90 % of the total grant



Lump sum – ex post controls (1/2)

Checks, reviews and audits for:

- Proper implementation of the action (e.g. technical audit)
- Compliance with the other obligations of the grant:
 - IPR obligations
 - Obligations related to third parties (e.g. financial support)
 - Other obligations (e.g. ethics, visibility of EU funding, etc.)



Lump sum – ex post controls (2/2)

Needed	Not needed
<input type="checkbox"/> Technical documents	<input type="checkbox"/> Time-sheets
<input type="checkbox"/> Publications, prototypes, deliverables	<input type="checkbox"/> Pay-slips or contracts
<input type="checkbox"/> Who did what?	<input type="checkbox"/> Depreciation policy
<input type="checkbox"/> ...any document proving that the work was done as detailed in Annex 1	<input type="checkbox"/> Travel invoices
	<input type="checkbox"/> ...actual costs

Already the case under the general MGA



4. Project monitoring

Project monitoring (1/2)

- **What:** checking the proper implementation of the Action and compliance with the obligations under the GA, including assessing deliverables and reports
- **Who:** REA Project Officer and Financial Officer, who may be assisted by external persons or bodies
- **When:** during the implementation of the project or afterwards
- **How:** different forms, reasons and consequences checks/reviews; audits/investigations/evaluations

Project monitoring (2/2)

Checks

- Checking Continuous reporting, e.g. submission of deliverables identified in Annex 1 (timing, content)
- REA may ask COO for any additional information

Reviews

- REA regular reviews: linked to the reporting periods and payments, e.g. after RP1
- Additional reviews possible (ad hoc)
- REA usually asks external experts for assistance (called Reviewers)
- Assessment of progress & scientific or technological relevance

Reporting & payments

TORCH reporting periods

- RP 1: month 1 to month 18
- RP 2: month 19 to month 36

Reports Submission

- within 60 days following the end of each RP
- technical and financial reports
- online submission only

Periodic Payments (Interim, final)

- within 90 days from the submission of the periodic report

Periodic reporting

H2020 template for periodic reporting, available on the Participant Portal

Periodic report content

Explanation of the work carried out
Progress made (including milestones, deliverables)
Any issues, deviations? Corrective measures?

Periodic report structure

Periodic technical report (Part A & B)
Periodic financial report

Regular project review

Modalities of review meetings

- Based on the documents submitted within the RP (periodic report, all deliverables due in that RP plus possible other documents)
- The reference document for the progress assessment is the GA and especially Annex 1 (Description of Action, DoA)
- Involved parties: project consortium members, independent experts, REA project officer, and policy officer(s) (optional, i.e. if policy feedback session planned)
- Venue: tbd (rather Brussels)
- Time: Mid-End of September/2022

5. Dissemination, Communication & Exploitation

Dissemination, Communication and Exploitation are contractual obligations

Dissemination (Art. 29)

"Unless it goes against their legitimate interests, each beneficiary must — as soon as possible — **'disseminate' its results by disclosing** them to the public by appropriate means"

Communication (Art. 38.1)

"The beneficiaries must **promote the action** and its results, by providing **targeted information** to multiple audiences in a **strategic and effective** manner"

Exploitation (Art. 28)

"Each beneficiary must — up to four years after the period set out in Article 3 — take measures aiming to **ensure 'exploitation' of its results**"

Communication vs. Dissemination

Communication	Dissemination
About the project and results	About results only
Multiple audiences Beyond the project's own community (including the media and the public)	Audiences that may use the results in their own work e.g. peers (scientific or the project's own community), industry and other commercial actors, professional organisations, policymakers
Inform and reach out to society , show the benefits of research	Enable use and uptake of results
Grant Agreement art. 38.1	Grant Agreement art. 29

Communication ≠ Dissemination

Acknowledgement of EU funding (Art. 38.1.2)

Use the EU logo



High-resolution logos are available here:

http://ec.europa.eu/research/participants/docs/h2020-funding-guide/grants/grant-management/acknowledge-funding_en.htm

Use text as indicated in the Grant Agreement

This project has received funding from the European Union's Horizon 2020 research and innovation programme under grant agreement No [number]

More info in H2020 Online Manual: http://ec.europa.eu/research/participants/docs/h2020-funding-guide/grants/grant-management/acknowledge-funding_en.htm

6. Policy feedback

What is policy feedback ?

- Policy feedback is a mechanism through which the project results feed into current and/or future policy-making
- Why is policy feedback necessary ?
 - to monitor the achievement of policy objectives
 - to encourage evidence-based policy making
 - to fine-tune policy, where necessary

What's in it for TORCH ?

- What can policy feedback bring to TORCH ?
 - The consortium actively feeds into EU policy discussions
 - Interaction with similar projects
 - Promotion of the project
- Type of policy feedback activities during project life-time
 - Policy brief as a mandatory deliverable at each reporting period
 - Ad hoc requests (e.g. for monitoring purposes)
 - Partake in cluster events

Policy brief

- Main elements
 - Mandatory deliverable for every reporting period (*either already foreseen in proposal or added during GAP*)
 - Partake in cluster events supports EC in monitoring achievements & impact
 - Basis for reflection on potential recommendations
 - Means for ensuring evidence-based policy making
- Main elements
 - Introduction will be prefilled
 - Brief should be max. 3 pages long



7. Final remarks

Final remarks

- Read GA & Guidelines**
 - 80% of your questions will be answered, e.g. When is a GA amendment necessary?
- Communicate!**
 - Coordinator, Beneficiaries & REA
 - Coordinator = 1st point of contact for REA
 - If there are problems = share them!
 - If there are positive aspects (success stories, policy-relevant results) = share them too!

Relevant information

H2020 Model Grant Agreement Lump Sum Pilot
http://ec.europa.eu/research/participants/data/ref/h2020/mga/lumpsum/h2020-mga-lumpsum-oid-maif_en.pdf

H2020 Annotated Model Grant Agreement (Lump Sum Pilot MGA from p. 815):
http://ec.europa.eu/research/participants/data/ref/h2020/grants_manual/ma/h2020-mga_en.pdf

H2020 On-line Manual
<https://ec.europa.eu/research/participants/portal/desktop/en/funding/auide.html>

Research Enquiry Service
<http://ec.europa.eu/research/index.cfm?x=services>

Keep in touch



Thank you for your attention !

Alina-Maria Bercea
Project Adviser
Alina-Maria.BERCEA@ec.europa.eu



© European Union 2020
Unless otherwise indicated the reuse of the presentation is authorized under the [CC BY-NC-SA](https://creativecommons.org/licenses/by-nc-sa/4.0/) license. For any use or reproduction of elements that are not owned by the EU, permission may need to be sought directly from the respective copyright holder.

SESSION 2 – February 9, 2021. 10:00-11:15 (CET). Open Session.

- Governance of the Project
- Work Packages Brief Presentations

TORCH
Transforming Open Responsible
Research and Innovation through
CHARM

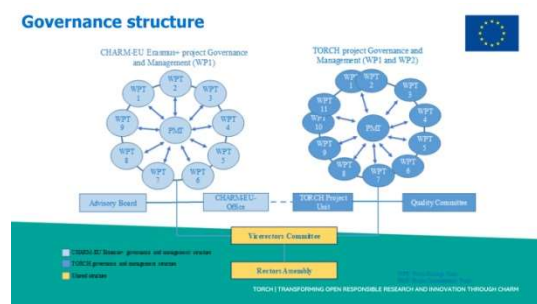
**Kick-off meeting -
February 8th & 9th
2021**

UNIVERSITAT DE BARCELONA, Trinity College Dublin, Eindhoven University, SEIKEN UNIVERSITY, UNIVERSITY OF WESTERLYN

Open session

- Governance of the project
- Brief presentation of workpackages

Governance



Governance structure

- **List of WP leaders**
 - WP1/WP2: Prof. Raul Ramos, UB Vice-dean of Research, Faculty of Economics and Business
 - WP3: Dr. Lorrain Leesson, TCD Associate Dean of Research & Professor in Deaf Studies
 - WP4: Prof. Albert Diaz, UB Rectors delegate for Research Institutes and Director UBICS
 - WP5: Mr. Gáetan Lan Sun Luk, UM, Director of Innovation and Associations
 - WP6: Dr. Balázs Aczéli, ELTE Associate Professor of Faculty of Education and Psychology
 - WP7: UU (TBD - Prof. Frank Miedema, Vice-rector of Research)
 - WP8: Dr. Lorrain Leesson, TCD Associate Dean of Research & Professor in Deaf Studies
Nina Shiel Research Fellow TORCH Project
 - WP9: ELTE (TBD)
 - WP10/WP11: UB (TBD)

Governance structure

- **PMT (M1-M36)**, responsible for the day to day overall implementation and monitoring of the project. The PMT will be composed by the WP leaders from all Work Packages, independently of their implementation period.
- **TORCH Project Managers**, key role to give access to internal resources, to produce partner data, budget control.
- **Representatives of each member of the Consortium into each WP**, specialists from each partner university in the theme ensuring interculturality and co-creation among the partners.
- **Quality committee**, will report to the PMT and act as an advisory board, offering an external evaluation on the quality of the project deliverables.
- **Vice-rectors Committee**, ensures the relation between partners in terms of strategy, communication and coordination among the synergies of the TORCH and CHARM EU projects. The VRC is the supervisory body for the execution of the Project which shall report to and be accountable to the Rectors' Assembly
- **Rectors Assembly**, support the overall implementation of both TORCH and CHARM EU projects as the ultimate decision-making body of the consortium and it will assure the coherence between both projects.

**Brief presentation
of workpackages**

**WP1 & WP2
Governance and Project Management**

WP1 & WP2 Leader: Raul Ramos, Prof, Universitat de Barcelona

Participants: UB, TCD, UU, ELTE, UM

WP1 Start date: Month 1 **End date:** Month 18
WP2 Start date: Month 19 **End date:** Month 36

WP1 & WP2 Objectives



- To lead the project according to the shared values, vision, and strategy of the CHARM-EU alliance (in coordination with the ERASMUS+ project)
- To manage the organisational, technical, administrative, and financial matters of the project.
 - to ensure the successful performance of the Grant Agreement with the EC
 - to set up the project governance structure and decision-making bodies as per the principles and procedures of CHARM-EU
 - to provide operational support (Secretariat) to project decision-making bodies, in synergy and coordination with the ERASMUS+ project
 - to facilitate a fluent and efficient implementation of the work plan
 - to ensure that all project objectives are accomplished in time and to the highest standards
 - to monitor work progress, with particular attention to possible risks, and when needed, to adopt contingency and corrective actions

TORCH | TRANSFORMING OPEN RESPONSIBLE RESEARCH AND INNOVATION THROUGH CHARM

WP1 & WP2 Tasks



- Project Governance (M1-M18)
- Management of the Grant Agreement and the Consortium Agreement (M1-M18)
- Project Management (M1-M18)
 - Project meetings: kick-off, PMT meetings, overall planning, progress, governance, Annual Forum (internal/external)
 - Project monitoring (in coordination with WP leaders)
 - Project performance (in coordination with WP leaders)
 - Data management
 - Risk assessment and contingency plan (in coordination with WP leaders)
 - Progress report

TORCH | TRANSFORMING OPEN RESPONSIBLE RESEARCH AND INNOVATION THROUGH CHARM

WP1 & WP2 Deliverables



Number	Deliverable title	Type	Dissemination level	Due date (in months)
D1.1.	Kick-off meeting	Report	Public	1
D1.2.	Risk management plan	Report	Confidential	3
D1.3.	Data management plan	Open Research Data Pilot	Confidential	6
D1.4.	First Annual Internal Forum Report	Report	Confidential	14
D2.1.	Second Annual Internal Forum Report	Report	Confidential	24
D2.2.	Third Annual Internal Forum Report	Report	Confidential	36

LB Lead Beneficiary for all deliverables in WP1 & WP2

TORCH | TRANSFORMING OPEN RESPONSIBLE RESEARCH AND INNOVATION THROUGH CHARM

WP3 Cross-Cutting Principles

Trinity College Dublin
Professor Lorraine Leeson
Dr Nina Shiel

TORCH | TRANSFORMING OPEN RESPONSIBLE RESEARCH AND INNOVATION THROUGH CHARM

WP No	WP Title	Lead Participant	Start Month	End Month
3	Cross-Cutting Principles	TCD	1	15

Inter/trans/disciplinary | Gender | Ethics and integrity
Must be present across the entire project

WP Personnel
Professor Lorraine Leeson
Dr Nina Shiel, Research Fellow, FT Postdoc (To be recruited), 18 months



TORCH | TRANSFORMING OPEN RESPONSIBLE RESEARCH AND INNOVATION THROUGH CHARM

Objectives	Tasks
<p>O3.1 Identify existing practices in the alliance in Interdisciplinary Research Ethics and Integrity and Gendered Innovation and identify best practices to produce a gap analysis for each alliance member for each of these elements.</p> <p>O3.2 Generate knowledge around the points of connectivity between the three cross-cutting areas in terms of current practices, best practice and gap analysis.</p> <p>O3.3 Provide perspectives on how additional gaps would need to be overcome to move to an inter-institutional best practice approach to these cross-cutting actions.</p> <p>O3.4 Add value to the other Transformational modules by co-programming stakeholder engagement and sharing outcomes.</p>	<p>T3.1 Landscape analysis (M1-M8) Lead: TCD, Participate: all. Identify existing activity and best practice within the alliance, including barriers or lack of knowledge of the 3 cross-cutting areas. Each University will help to provide information and support for stakeholder events. (T3.1)</p> <p>T3.2 Best Practice & gap analysis (M7-M12) Lead: TCD, Participate: all. Using expertise from previous successful projects and tools already developed, construct a report to outline best practice and show the gaps between practices in each alliance member and that best practice. Each University will review and confirm/refute the gap analysis. (O3.3).</p> <p>T3.3 Forum & integration (M12-M15) - Lead: TCD, Participate: all. For the annual intelligence 'think-in' Forum, draw up a set of questions to drive discussion on how the legal, regulatory and financial barriers identified might be overcome, particularly in the context of deriving common strategies of transformation. All Universities will participate. (O3.2) (O3.3)</p>



TORCH | TRANSFORMING OPEN RESPONSIBLE RESEARCH AND INNOVATION THROUGH CHARM

Deliverables

- D3.1 Landscape Analysis (M8):** Report on current practices and barriers within each alliance member, with some comparative information as a result of engagement with other alliances in the 3 cross-cutting areas.
- D3.2 Set of questions for input to the Forum and for use by WP8 (M14):** to drive discussion in the first annual forum on how the barriers identified might be overcome.
- D3.3 Best Practice Development and Gap Analysis (M15):** to outline best practice and show the gaps between that best practice and current practices in each member and across the Alliance collectively.



TORCH | TRANSFORMING OPEN RESPONSIBLE RESEARCH AND INNOVATION THROUGH CHARM

WP4 Science Agenda

WP4 Leader: Albert Diaz-Guilera, Prof., Universitat de Barcelona
Participants: UB, TCD, UU, ELTE, UM

WP4 Start date: Month 1 **End date:** Month 18

TORCH | TRANSFORMING OPEN RESPONSIBLE RESEARCH AND INNOVATION THROUGH CHARM

WP4 Main Objective



- develop the list of challenges the CHARM-EU alliance will face in each thematic area
- from institutions strengths and complementarity
- taking into consideration:
 - the state-of-the-art
 - the financing mechanisms
 - barriers
 - common infrastructure needed to implement them

TORCH | TRANSFORMING OPEN RESPONSIBLE RESEARCH AND INNOVATION THROUGH CHARM

Thematic areas of the Scientific Agenda



- Food, Water and Life&Health
- Biodiversity, Environment and Climate Change
- (In)Equality, Economic Growth and Governance (including Poverty/Population movements)



TORCH | TRANSFORMING OPEN RESPONSIBLE RESEARCH AND INNOVATION THROUGH CHARM

Food, Water and Life&Health



- Equitable access to food, water and sanitation, and health. Including quality health products (medicines, vaccines, diagnostics...) and skilled workforce.
- Water resources and water policy regulations: moving towards a sustainable water cycle.
- Long Life course approach to health (continuum of care): from childhood & adolescents' health to healthy aging11 (including newborn and maternal health, sexual & reproductive health, mental health and disability).
- Infectious diseases and preparedness for epidemics/pandemics.
- Delivering health in conflict and crisis.

TORCH | TRANSFORMING OPEN RESPONSIBLE RESEARCH AND INNOVATION THROUGH CHARM

Biodiversity, Environment and Climate Change



- Biodiversity and its impact on agriculture and food, food production and food safety issues.
- Impact of changing environment and climate on health (non-communicable diseases: cancer, respiratory diseases, cardiovascular diseases...)
- Climate change implications in exposed regions: circumpolar regions, desertification in the
- Mediterranean basin, mountain areas in Europe, exposed coastal regions or inland agricultural areas.
- Climate change and global & planetary health.
- Climate-induced migrations: diagnose and solutions.

TORCH | TRANSFORMING OPEN RESPONSIBLE RESEARCH AND INNOVATION THROUGH CHARM

(In)Equality, Economic Growth and Governance (including Poverty/Population movements)



- (In)equality of opportunities (education, work...), economic growth. Social inclusion/exclusion.
- Gender inequality.
- Government pivotal role in achieving fair and egalitarian societies. Instruments available to alleviate inequality and to anticipate/mitigate poverty (regulation, taxation, etc.).
- Role of local governments versus state or supra-state governments: subsidiarity or centralisation.
- The migration crisis and their impact in European societies.
- Life in an aging society: societal and economical aspects.
- Sustainable smart green cities.

TORCH | TRANSFORMING OPEN RESPONSIBLE RESEARCH AND INNOVATION THROUGH CHARM

WP4 Operational Objectives



- **O4.1** Analyze the research strengths and complementarity in each institution.
- **O4.2** List the challenges to face given the diversity and complementarity of our research strengths. Focus on inter- and transdisciplinary cooperation, combining curiosity-driven and utility-driven research, with a clear view on its impact, with particular importance to societal challenges and the needs of the community.
- **O4.3** Study financing instruments, barriers and infrastructure to implement the common science agenda.

TORCH | TRANSFORMING OPEN RESPONSIBLE RESEARCH AND INNOVATION THROUGH CHARM

WP4 Tasks



- 1. Institution's strengths and complementarity analysis for each thematic area (M1-M4)**
 1. Strengths of each institution
 2. Complementarity within institutions -> Interdisciplinary research
 3. Complementarity between partners -> Promote collaborations
- 2. Transdisciplinarity common challenge agenda and state of the art (M5-M8)**
 1. List of societal challenges to face in each area
 2. Added value in collaboration
 3. Proposal of a Knowledge Creation Team
- 3. Implementing the Common Science Agenda, an analysis on financing mechanisms, barriers and common infrastructures (M9-M15)**
 1. Funding instruments for the common science agenda
 2. Legal, ethical, financial barriers

TORCH | TRANSFORMING OPEN RESPONSIBLE RESEARCH AND INNOVATION THROUGH CHARM

WP4 Deliverables



Number	Deliverable title	Type	Dissemination level	Due date (in months)
D4.1.	Strengths and complementarity report	Report	Confidential	4
D4.2.	Common Science Agenda challenge list	Report	Public	8
D4.3.	Implementation analysis report	Report	Confidential	15

LB Lead Beneficiary for all deliverables in WP4

TORCH | TRANSFORMING OPEN RESPONSIBLE RESEARCH AND INNOVATION THROUGH CHARM

Work Package 5 – Strengthening cooperation between universities and Enterprises



Phase 1 : Month 1 to Month 15

Work Package Leader : LAN SUN LUNK Gaetan, Director of Innovation and Associations, University of Montpellier

Objectives :

- Connect universities to innovation ecosystems and create an innovation community
- Give partnerships and transfer activities a new dynamic by propelling them on a European scale

TORCH | TRANSFORMING OPEN RESPONSIBLE RESEARCH AND INNOVATION THROUGH CHARM

- Transdisciplinarity : enhance cooperation between universities and non-academic actors
- Foster Research and Innovation



- Need to harmonize and upward practices → be more efficient in :
 - Collaborations with non-academic partners
 - Detecting, supporting and valorizing innovation and students' entrepreneurship
- Analyzing stakeholders' procedures in partnership and research's valorization : Research and Partnership Support Offices, Technologies Transfers Offices, Start-ups incubators ...

New dynamic in :

- ✓ Connecting universities with multi-stakeholders in an innovative ecosystem
- ✓ Uptaking technologies
- ✓ Facilitating access to finance

TORCH | TRANSFORMING OPEN RESPONSIBLE RESEARCH AND INNOVATION THROUGH CHARM

4 TASKS



- 1) Analyzing contexts & strategies implemented by universities to associate with non-academic actors
 - Deliverable : Context and strategy analysis on how alliance's partners associate with non-academic-actors (Due Date : M12)
- 2) Identifying and promoting best practices, procedures and tools to detect Innovation
 - Deliverable : Good practices report on innovation's detection (Due Date : M14)
- 3) Analyzing spin-off creations' strategies and operating methods
 - Deliverable : Report analysing various spin-off creation's approaches (Due Date : M12)
- 4) Capitalizing on student's entrepreneurship support methods
 - Deliverable : Report on student entrepreneurship support methods (Due Date : M15)

TORCH | TRANSFORMING OPEN RESPONSIBLE RESEARCH AND INNOVATION THROUGH CHARM

ACTION POINTS



- ✓ Survey on Task 1 (Analyzing contexts & strategies implemented by universities to associate with non-academic actors) will be shared with the alliance in a few weeks.

Conclusion

- Upward alliance's practices in R&I
- Better connection to innovative ecosystem & collaboration with non-academic actors
- Elaborate recommendations to policy makers at national and European levels
- Create a replicable model and innovative community

TORCH | TRANSFORMING OPEN RESPONSIBLE RESEARCH AND INNOVATION THROUGH CHARM

Work Package 6 Mainstreaming of comprehensive Open Science practices

Work Package Leader:
Balazs Aczel, associate professor, ELTE, Hungary

Start date:
2021.01. (Month 1)

End date:
2022.03. (Month 15)

TORCH | TRANSFORMING OPEN RESPONSIBLE RESEARCH AND INNOVATION THROUGH CHARM

OBJECTIVES

- Mainstreaming of comprehensive Open Science practices
- democratise scientific knowledge
- Open Science to be the basis of the future ecosystem of research and innovation

TORCH | TRANSFORMING OPEN RESPONSIBLE RESEARCH AND INNOVATION THROUGH CHARM

OBJECTIVES

O6.1 The Open Science Scope
in-depth investigation on the reality of all aspects of Open Science principles and practices in the partner universities.

O6.2 The Design of the CHARM-EU Open Science Community Dashboard
a highly-visible demonstrator of Open Science in-action, presenting shared CHARM-EU teaching, research and policy resources as aggregated, open content contributed by all partner institutions.

TORCH | TRANSFORMING OPEN RESPONSIBLE RESEARCH AND INNOVATION THROUGH CHARM

Task 6.1 CHARM-EU Open Science Scope

(M1-M8) - Lead: ELTE, Participate: all

- Develop and implement a framework and mechanism to capture, report and compare Open Science policies, practices, and capacities
- All partner institutions will share their existing rules, principles and experiences
- A comparative report will be created with
 - a gap analysis and action task lists, monitoring policies, practices, infrastructures and capacities across
- Open Science 'Eight Pillars' will be monitored and analysed:
 - Open Access, infrastructural support, data management policies, research integrity codes, experience on Open Science advocacy, training and skills provision, rewards and incentives

TORCH | TRANSFORMING OPEN RESPONSIBLE RESEARCH AND INNOVATION THROUGH CHARM

Task 6.2 Open Science Community Dashboard

(M7-M15) - Lead: ELTE, Participate: all

- Designing a strategy, discovery, and collaboration platform
- web-based content discovery platform
- easy access, discoverability and reusability to a range of selected CHARM-EU resources, and outputs
- shared content can include selected research publications, research data, open educational resources

TORCH | TRANSFORMING OPEN RESPONSIBLE RESEARCH AND INNOVATION THROUGH CHARM

DELIVERABLES

D6.1 - Comparative
CHARM-EU Open
Science report
(M8)

D6.2 - Design of the
CHARM-EU Open Science
Community Dashboard
(M15)

2021.08.

2022.03.

TORCH | TRANSFORMING OPEN RESPONSIBLE RESEARCH AND INNOVATION THROUGH CHARM

Work Package 7 Civil engagement

TORCH | TRANSFORMING OPEN RESPONSIBLE RESEARCH AND INNOVATION THROUGH CHARM

TORCH – WP7 (1/3)

O7.1 - To collect and share existing modalities and existing practices for stimulating co-creation of challenge driven research and innovation with societal stakeholders and to further “democratisation of science”.

- Who are we currently involving in public engagement and citizen science?
- How much attention do we have for diversity and inclusiveness in the selection of stakeholders?
- What drives us: demand-pull or technology push?
- Learn from each other considering geographical & cultural variations.

TORCH | TRANSFORMING OPEN RESPONSIBLE RESEARCH AND INNOVATION THROUGH CHARM

TORCH – WP7 (2/3)

O7.2 – To collect and share existing practices to balance between mono-disciplinary, excellence driven research and global challenge driven transdisciplinary research and innovation.

- How should I spend time and effort as academic?
- Recognition and Reward practices
- Communicating Science - interaction with creative minds towards imaginaries.

TORCH | TRANSFORMING OPEN RESPONSIBLE RESEARCH AND INNOVATION THROUGH CHARM

TORCH WP7 (3/3)

- Next steps
 - Establishing TORCH WP7 team;
 - Team member contact information to Bas Leeflang (b.r.leeflang@uu.nl)
 - UU decision on WP7-lead
 - WP7 team to agree on questionnaires for O7.1 and O7.2;
 - Focus on synergies with other WPs.

TORCH | TRANSFORMING OPEN RESPONSIBLE RESEARCH AND INNOVATION THROUGH CHARM



WP9 Action plans and pilots

TORCH | TRANSFORMING OPEN RESPONSIBLE RESEARCH AND INNOVATION THROUGH CHARM



Overview

- Months 25–36
- Led by ELTE with the participation of each partner
- In five highly flexible tasks closely connected to the achievements of WPs 3–8.
 - 9.1. Selection of action plans and pilots
 - 9.2. Development of action plans
 - 9.3. Implementation of pilot activities
 - 9.4. Open Science Skills Training and Education – design
 - 9.5. Pilots Final Report with Recommendations

TORCH | TRANSFORMING OPEN RESPONSIBLE RESEARCH AND INNOVATION THROUGH CHARM

Objectives



Identifying a set of actions to test the implementation of transformative actions at university or Alliance level, based on policies and strategies that can result in pilots; creating action plans to be implemented after the project period with complementary funding.

Initiating the implementation of **some** of the actions based on strategies of WPs.

Monitoring progress, identifying obstacles, evaluating results (in certain cases only partial implementation), providing further input for the refining stage of WP8 and other WPs (relative importance of WP 9).

TORCH | TRANSFORMING OPEN RESPONSIBLE RESEARCH AND INNOVATION THROUGH CHARM

Examples for Task 9.3 possible pilot activities



- Setting up at least one common research activity (combining Common Science Agenda, Civil Engagement, Business Cooperation)
- Introducing at least one innovation networking circle in the frame of innovation ecosystem between universities, business and other communities
- Creating an Open Science Rewards and Recognition Toolbox
- Creating a CHARM-EU Open Science Community Dashboard
- Starting a joint, interdisciplinary citizen science project with local authorities and local communities (institutional pilot)

TORCH | TRANSFORMING OPEN RESPONSIBLE RESEARCH AND INNOVATION THROUGH CHARM

Open Science Skills Training and Education – design



- Designing a training and education module on Open Science skills (incl. Research Integrity values) –online, face-to-face and blended
- Targeting researchers at all stages of the career, university leaders, PhD students and business and civil society collaborators from the Alliance
- Mainstreaming the best open science practices selected from the partners
- Focus on the university leaders of our partner Universities
- Involvement of business and civil society collaborators
- Application of quality standards (incl. standards of open methodologies)

TORCH | TRANSFORMING OPEN RESPONSIBLE RESEARCH AND INNOVATION THROUGH CHARM

Deliverables



- **D9.1. Pilot Plan** (M26)
- **D9.2. Actions Plans** to be realised after the TORCH project (M32)
- **D9.3. Progress report on in-progress pilots** that are work-in-process at the end of month 36 (M36)
- **D9.4. Open Science Training Module** (M36)
- **D9.5. Pilot Final Report with Recommendations** (M36)

TORCH | TRANSFORMING OPEN RESPONSIBLE RESEARCH AND INNOVATION THROUGH CHARM



WP8 Common Policies and Strategies

Trinity College Dublin
Professor Lorraine Leeson
Dr Nina Shiel

TORCH | TRANSFORMING OPEN RESPONSIBLE RESEARCH AND INNOVATION THROUGH CHARM

WP No	WP Title	Lead Participant	Start Month	End Month
8	Common Policies and Strategies	TCD	16	36
Bringing it all together				
WP Personnel	Professor Lorraine Leeson Dr Nina Shiel, Research Fellow, FT Postdoc (To be recruited), 18 months			



TORCH | TRANSFORMING OPEN RESPONSIBLE RESEARCH AND INNOVATION THROUGH CHARM



Objectives	Tasks
OB.1 Progress the development of integrated RRI strategies and policies within each Alliance University developments and which take into account the multiplicity of their connectivity points	TS.1. Interconnectivity & policy/strategy development (M18-M17) - Lead: TCD, Participate: all. Collective sharing of the learnings and outcomes from WPs 4, 5, 6 and 7 TS.2. Propose policy/strategy development (M18-M19) - Lead: TCD, Participate: all. A number of policy and strategic areas will be proposed by the WP 3-7 leaders responding to gaps ascertained in WPs 3-7
OB.2 Elaborate a common alliance set of RRI strategies and policies that will drive CHARM-EU future	TS.3. Development of draft strategies/policies - (M19-M23) - Lead: TCD with involvement of all beneficiaries, Participate: all. Having constructed a prioritised list of policy and strategies with the relevant interconnections highlighted, the work package leaders (WPs 3-7) will draft up what such a policy or strategy might encompass working collectively TS.4. Draft common integrated RRI recommendations framework (M21-M23) - Lead: TCD, Participate: all. Develop a common set of recommendations for connected RRI strategies and policies within which the selected strategies/policies will sit.

TORCH | TRANSFORMING OPEN RESPONSIBLE RESEARCH AND INNOVATION THROUGH CHARM



Objectives	Tasks
OB.3 Elaborate the impact of an interconnected RRI on research assessment	TS.5. Cost-benefit analysis (M21-M23) - Lead: TCD, Participate: all. TS.6. 3rd draft strategies/policies (M23-M24) - Lead: TCD, Participate: all. A third draft of the selected policies/strategies is presented to the PMF, and Vice rectors and rectors assembly for approval
OB.4 Guide the development of action plans and pilots to progress RRI principles and connectivity point	TS.7. Review of Strategy/Policy & common recommendations framework (M25-M35) - Lead: TCD, Participate: all. Each University will engage and lead at least one change process pilot, the results of which they will feed back to a possible revision of a given strategy/policy or aspect of the common framework
OB.5 Provide some content and guidance for training material for the Alliance community	

TORCH | TRANSFORMING OPEN RESPONSIBLE RESEARCH AND INNOVATION THROUGH CHARM

Deliverables

- D8.1 Interconnectivity Analysis (M17):** This analysis report will consolidate for each University their progress collectively across the RRI areas examined in WP3-7 (noting that the 3 cross cutting WP3 RRI principles interconnect with all of the other transformational modules).
- D8.2 Pre-Piloting Strategies/Policies & common recommendation Framework (M24):** Pre-piloting version of the selected Strategies and Policies developed to promote aspects of an interconnected RRI and pre-piloting version of the common framework of integrated RRI strategies and policies.
- D8.3 Research Assessment Report (M36):** It outlines the impact of implementing a connected RRI on research assessment and provides recommendations on change evaluation.
- D8.4 Post-piloting Strategy/Policies & common recommendation Framework (M36):** D8.2 will be reviewed with the results from pilots.

TORCH | TRANSFORMING OPEN RESPONSIBLE RESEARCH AND INNOVATION THROUGH CHARM

WP10 & WP11 Communication and Dissemination

WP10 & WP11 Leader: TBD, Universitat de Barcelona

Participants: UB, TCD, UU, ELTE, UM

WP10 Start date: Month 1 **End date:** Month 18
WP11 Start date: Month 19 **End date:** Month 36

TORCH | TRANSFORMING OPEN RESPONSIBLE RESEARCH AND INNOVATION THROUGH CHARM

WP10 & WP11 Objectives

- To **define and implement a comprehensive strategy to maximise both, the communication and dissemination of the project and its results taking advantage of the experience and tools used in the ERASMUS+ project**
- Target audiences consist of **RRI organizations** at European and other international levels, with strong emphasis on **European universities and their major stakeholders**, including the **whole citizenship and the media** to create public awareness around the action)
 - To **promote and inform** about the overall TORCH project content, the CHARM-EU alliance as well as the European Universities initiative, to audiences within and beyond the alliance, from the wider community around European universities
 - To **share the knowledge and the results** obtained in the project, making available the documents and tools produced, in a timely and effective manner, to multiple target groups of potential users and beneficiaries
 - To **collaborate and share with other European Universities** by organising and participating in joint activities of common interest

TORCH | TRANSFORMING OPEN RESPONSIBLE RESEARCH AND INNOVATION THROUGH CHARM

WP10 & WP11 Tasks

- Communication** (M1-M18 + M19-M36)
- Dissemination** (M1-M18 + M19-M36)
- Collaboration with other Alliances** (M19-M36)
 - Synergies with ERASMUS+ project
 - TORCH web page, Communication materials & Communication and dissemination strategy and action plan
 - Annual Open Forum
 - Short Policy Briefs
 - Participation in 2 Conferences per year; Organization of Workshops & Conferences (1 per year); Publications (4 survey papers in academic journals + 3 dissemination);
 - Exploitation of results + indicators to evaluate communication success

TORCH | TRANSFORMING OPEN RESPONSIBLE RESEARCH AND INNOVATION THROUGH CHARM

WP10 Deliverables

Number	Deliverable title	Type	Dissemination level	Due date (in months)
D10.1.	TORCH webpage	Report	Public	2
D10.2.	Communication materials	Report	Public	4
D10.3.	Communication & Dissemination Strategy and Action plan	Report	Public	6
D10.4.	Annual Open Forum 1	Report	Public	14
D10.5.	Communication and Dissemination Report 1	Report	Public	18
D10.6.	Short Policy Brief 1	Report	Public	18

WP11 Deliverables include Annual Open Forum 2 (M25) & 3 (M36), Communication and Dissemination Report 2 (M36) & Short Policy Brief 2 (M36).
 LE Lead Beneficiary for all deliverables in WP10 & WP11

TORCH | TRANSFORMING OPEN RESPONSIBLE RESEARCH AND INNOVATION THROUGH CHARM

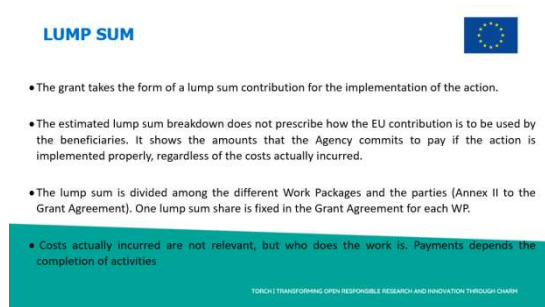
TORCH
 Transforming Open Responsible
 Research and Innovation through
 CHARM

MOLTES GRÀCIES
 MUCHAS GRACIAS
 FORÇA GRÀCIAS
 MANY THANKS
 GO RAIBH MAITH AGAT
 HEEL ERG BEDANKT
 MERCI BEAUCOUP
 NAGYON KÖSZÖNÖM
 DANKE SCHÖN!

This project has received funding from the European Union's Horizon 2020 research and innovation programme under grant agreement No 101017229

SESSION 2 – February 9, 2021. 11:30-13:30 (CET). Closed Session.

· Presentation of the Budget, Reporting and Payment Calendar⁷



⁷ Slides with confidential information appear blurred

· TORCH Planning Process

TORCH planning process

Kick-off meeting - February 8th & 9th 2021

THE PROJECT HAS RECEIVED FUNDING FROM THE EUROPEAN UNION'S HORIZON 2020 RESEARCH AND INNOVATION PROGRAMME UNDER GRANT AGREEMENT No 101017229

First year deliverables

WP	Name of the work package	Name of deliverable/for activity	Date
		Kick-off meeting report	January 2021
WP1	Governance and Project Management	Risk management plan	March 2021
		Data management plan	June 2021
		Landscape analysis	August 2021
WP3	Cross Cutting Principles	Strength and complementary report	April 2021
WP4	Common Science Agenda	Common Science Agenda challenge list	August 2021
		Context and strategy analysis on how alliance's partners associate with non-academic actors	December 2021
WP5	Strengthening cooperation between universities and enterprises	Report analysing various spin-off creation's approaches	December 2021
WP6	Mainstreaming of open science practices	Comparative CHARM EU Open Science report	August 2021
WP10	Communication and Dissemination	TORCH web page	February 2021
		Communication materials	April 2021

TORCH | TRANSFORMING OPEN RESPONSIBLE RESEARCH AND INNOVATION THROUGH CHARM

Planning methodology

TORCH | TRANSFORMING OPEN RESPONSIBLE RESEARCH AND INNOVATION THROUGH CHARM

Shared tools for management

Kick-off meeting - February 8th & 9th 2021

THE PROJECT HAS RECEIVED FUNDING FROM THE EUROPEAN UNION'S HORIZON 2020 RESEARCH AND INNOVATION PROGRAMME UNDER GRANT AGREEMENT No 101017229

Share tools and management

- For now
 - Teams group
- SharePoint linked to Teams a separate one for TORCH but with similar (CHARM-EU SharePoint)
- Some management procedures (work in process)

TORCH | TRANSFORMING OPEN RESPONSIBLE RESEARCH AND INNOVATION THROUGH CHARM

Next steps

Kick-off meeting - February 8th & 9th 2021

THE PROJECT HAS RECEIVED FUNDING FROM THE EUROPEAN UNION'S HORIZON 2020 RESEARCH AND INNOVATION PROGRAMME UNDER GRANT AGREEMENT No 101017229

Next steps

- Governance and teams in place (22nd of February). Each partner University nominates:
 - WP leaders (some still to be appointed)
 - Project managers (some still to be appointed)
 - Team members for each WP (to be appointed, each work package leader describes and sent expected profile to partners)
 - Vice-rectors for the Vice-rectors Committee
 - Proposals for the Quality Committee (one nominee by University)
- First Project management team meeting by XXXXX
- Work package planning by 28 of February

TORCH | TRANSFORMING OPEN RESPONSIBLE RESEARCH AND INNOVATION THROUGH CHARM

MOLTES GRÀCIES MUCHAS GRACIAS FORÇA GRÀCIAS MANY THANKS GO RAIBH MAITH AGAT HEEL ERG BEDANKT MERCİ BEAÇOUŞ NAGYON KÖSZÖNÖM DANKE SCHÖN!

THE PROJECT HAS RECEIVED FUNDING FROM THE EUROPEAN UNION'S HORIZON 2020 RESEARCH AND INNOVATION PROGRAMME UNDER GRANT AGREEMENT No 101017229